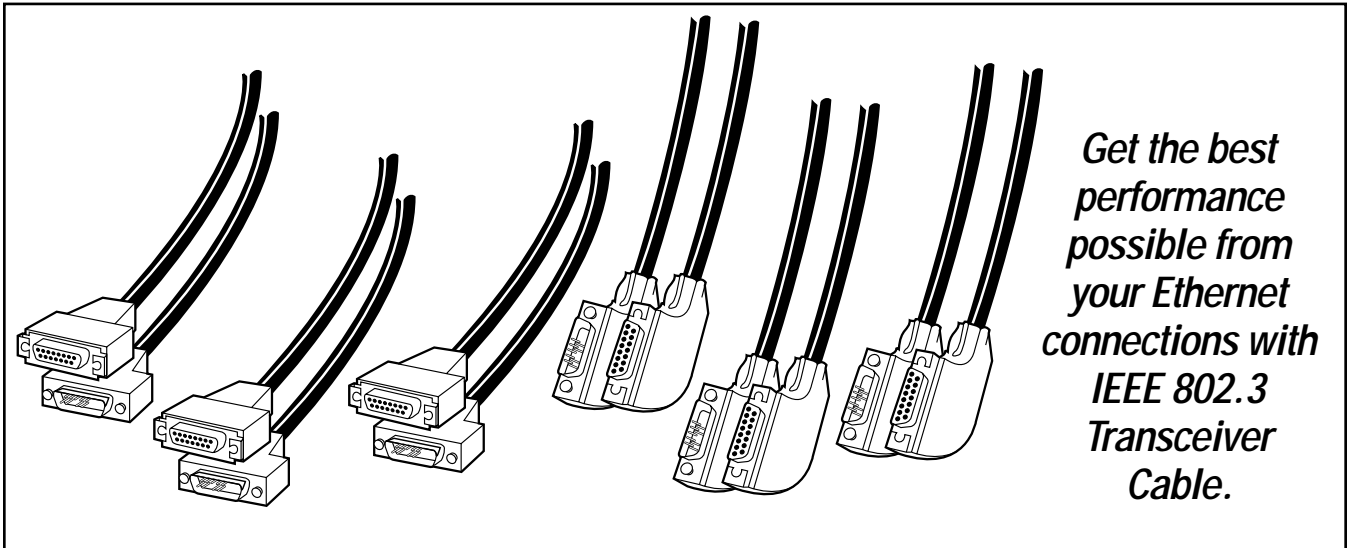


# BLACK BOX<sup>®</sup>

## NETWORK SERVICES

### 802.3 TRANSCEIVER CABLES



#### Key Features

- ▶ **Additional noise protection in high-noise environments.**
- ▶ **Reduced signal breakup at maximum transmission distances.**
- ▶ **Highest-quality cable now available in an IEEE 802.3 version.**
- ▶ **Four types to suit your particular application.**

The right connections are vital to the trouble-free operation of your network. You can lose performance drastically, for example, by getting false or excessive collision indications on your network when you cable is not grounded to the right pin.

Those users who need cable built for the IEEE Transceiver Cable in standard lengths for their applications.

Choose the right cable for any operating environment. The Heavy Duty version is best for in-wall installations from the Ethernet transceiver to a wall plate.

We also have an Office 802.3 Transceiver Cable when you need to run through tight spaces from the wall plate to your equipment. This cable is lightweight and flexible enough to be easily twisted, turned, and looped around office furniture up to

4.9 m from the wallplate.

We carry all three cables in a Right Angle version so you can make connections where space is at a premium. Each end of this cable has a right-angle hood for easy installation with male or female connections.

You can run the Heavy Duty and Plenum versions of this cable to a maximum length of 164 feet (50 m) without significant signal degradation. Also, the isolated ground shield of all 802.3 cable gives additional protection in noisy operating environments.

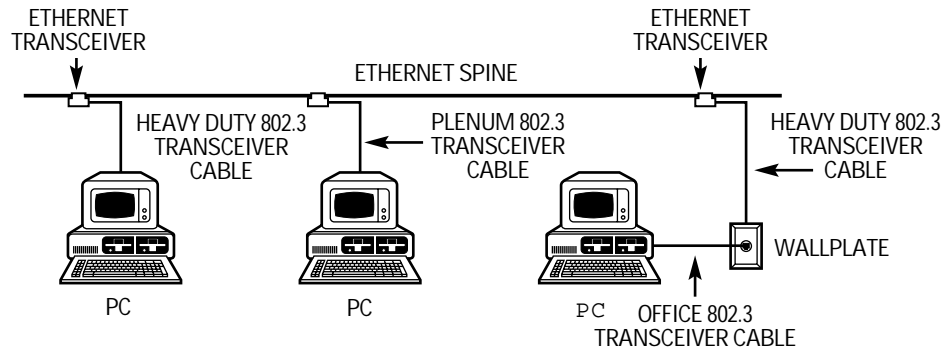
*Get the best performance possible from your Ethernet connections with IEEE 802.3 Transceiver Cable.*

The results you get from your network will depend in large part on the cable you can choose to run it. Your data is too valuable to be crippled by the wrong cable or cable that's less than top-quality. We use only the finest components on the market. That's why we can offer a lifetime guarantee with each cable.

#### Typical Applications

You can run this 802.3 cable from any Ethernet transceiver to a computer. Equipment that needs this type of cable has all shields of the individual signal and power pairs connected to Pin 4. Data General is one manufacturer that builds its computers to comply with IEEE 802.3

# Run your Ethernet on any of three 802.3 Transceiver Cables.



## Specifications

**Cable Construction:** Gray PVC jacket

**Number of Conductors:** 9

**Conductor Gauge:** 20 AWG

**Conductor Material:** Tinned annealed copper

**Resistance:** 10.4 ohms per 1000 ft. at 20°C

**Shield:** Individually shielded pairs, 100% foil and braided

**Outside Diameter:** 0.4 inch

## Technically Speaking

- There are three Ethernet standards; Ver. 1, Ver. 2 and 802.3. In Version 2, all shields are connected to Pin 1 and the AUI connector shell. Most Ethernet cables are built this way.
- In Version 802.3, all shields of the individual signal and power pairs are connected to Pin 4. The overall AUI cable shield is connected to the AUI connector shell to provide a cable ground.
- Most Ethernet Ver. 1 equipment uses Ver. 2 type cables.

## Ordering Information

PRODUCT NAME	10-Ft. (3-m)	16-Ft. (5-m)	33-Ft. (10-m)	66-Ft. (20-m)	131-Ft. (40-m)	TERM. FEE	CUSTOM LENGTHS
Heavy Duty 802.3 Transceiver Cable	LCN205-003M	LCN205-005M	LCN205-010M	LCN205-020M	LCN205-040M	LCN205-MF	LCN205-CABL
Right Angle PL 802.3 Transceiver Cable	LCN256-003M	LCN256-005M	LCN256-010M	LCN256-020M	LCN256-040M	LCN256-MF	LCN256-CABL

PRODUCT NAME	3.2-Ft. (1-m)	6.5-Ft. (2-m)	10-Ft. (3-m)	16-Ft. (5-m)	TERM. FEE	CUSTOM LENGTHS
Office 802.3 Transceiver Cable	LCN215-001M	LCN215-002M	LCN215-003M	LCN215-005M	LCN215-MF	LCN215-CABL
Right Angle JS 802.3 Transceiver Cable	LCN216-001M	LCN216-002M	LCN216-003M	LCN216-005M	LCN216-MF	LCN216-CABL



Black Box offers the best warranty program in the industry—Fido Protection®. For more information, request **FaxBack 22512**.