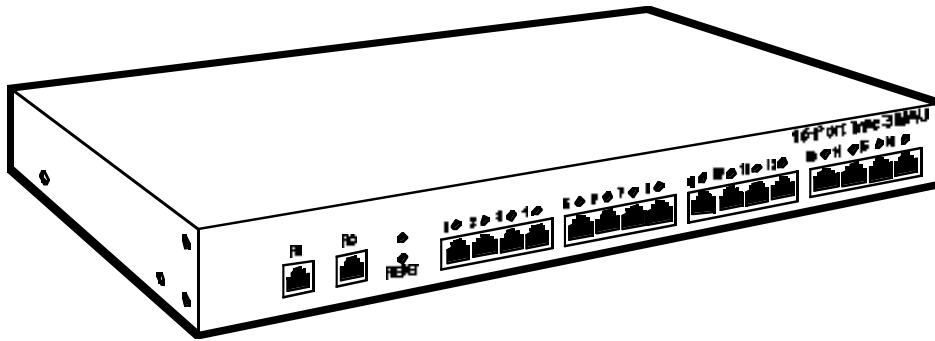




BLACK BOX[®]

NETWORK SERVICES

16-Port Type 3 MAU



This nonpowered MAU gives you 16 ports, and fits in the rack space of an 8-port MAU.

Key Features

- ▶ 16 lobe ports in a single 1U-high chassis.
- ▶ Port reset button.
- ▶ Port status LEDs.
- ▶ Can be flush- or recessed-rack-mounted, wall- or shelf-mounted with hardware (included).
- ▶ Ring In, Ring Out auto wrap.
- ▶ Lobe ports are shielded RJ-45 connectors.

The 16-Port Type 3 MAU provides additional ports for high-density wiring closets. This MAU does not require AC power and also does not require the use of an insertion tool during installation.

In comparison to using two 8-port MAUs, the 16-port MAU costs less. Also, you only use half of the rack space of common 8-port MAUs.

Since no AC power is required, the MAU provides flexibility in the choice of where to locate the wiring installation, which may be non-air-conditioned areas, such as warehouses and closets.

A long-life lithium battery provides power to a circuit that allows the manual reset of all lobe circuits. You simply press a button to reset the ports. This eliminates the need for an insertion tool during installation.

Status LEDs are powered by the attaching Token Ring adapters, and provide a visual indication of connect status.

The MAU automatically detects the removal of a cable and wraps the Ring In or Ring Out port—so there's no network downtime!

Shielded RJ-45 connectors on the lobe ports provide support for UTP or STP 100-ohm cable. Use UTP cabling for much less cost than STP cabling. Or use 100-ohm STP cabling if you require greater distances.

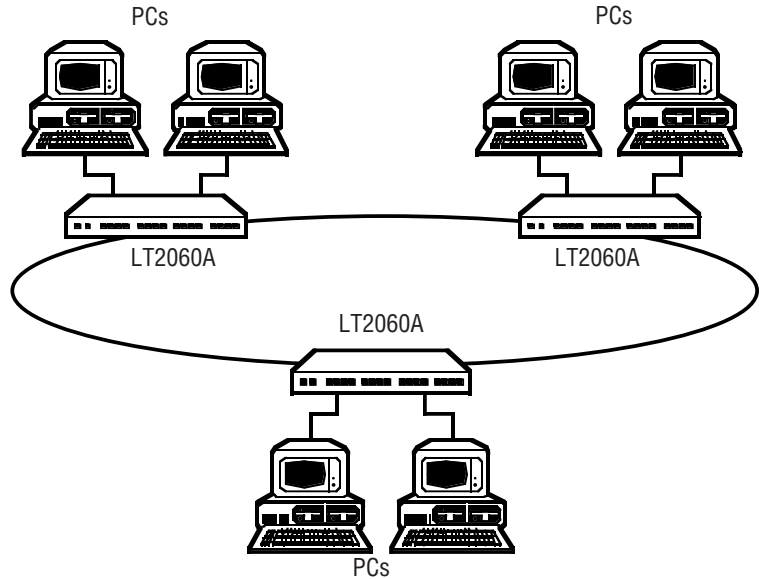
And the MAU operates at 4 or 16 Mbps. No configuration switches are required.

You choose the mounting method you prefer—flush or recessed rack-mount, wall- or shelf-mounted—and the hardware's included with the MAU.

Typical Application

Connect three MAUs together via Ring In and Ring Out to form a main ring. Add workstations to the ring via lobe port connections.

In the diagram at right, three MAUs are connected together to form the main ring.



Technically Speaking

The 16-Port Type 3 MAU is used in the same way as the industry-standard IBM 8228 token ring MAU. It is a wiring hub used to create a star wiring configuration from the main ring to individual token ring workstations. Like the IBM 8228 MAU, the 16-Port Type 3 MAU has Ring In and Ring Out connections on the front panel. However, it has 16 workstation ports, rather than 8, while using no additional

rack space. The MAU has RJ-45 connectors that allow the use of less-expensive UTP cabling. The MAU has LEDs for Port Status and Reset to give you status at a glance. It also has a reset button, which is powered by an included lithium battery and eliminates the need for a costly insertion tool.

Additional equipment you may need:

- Shielded or Unshielded Twisted-Pair Cable
- Token Ring Interface Cards for workstations

For these and other components...

Call our expert Technical Support Staff for all your LAN needs. They'll help you find the best equipment for your application.

Ordering Information

This information will help you place your order quickly.

Specifications	(1) Ring-Out
Relay Tool Required—None	Indicators—LEDs: (16) Port Status, (1) Reset
Speed—4 or 16 Mbps	Power—Nonpowered; reset button powered by lithium battery (included)
CE Approval—All items listed are approved	Size—H4.3 x W43.7 x D15.2cm
Temperature—Operating: 0 to 50 °C; Storage: -55 to 85 °C	Weight—1.6 kg
Relative Humidity—5 to 95%, non-condensing	
Maximum Altitude—Operating: 3040m; Non-operating: 12160m.	
MTBF—90,322 hours	
Connectors—(16) RJ-45 shielded, (1) Ring-In,	

PRODUCT NAME	ORDER CODE
16-Port Type 3 MAU	LT2060A