

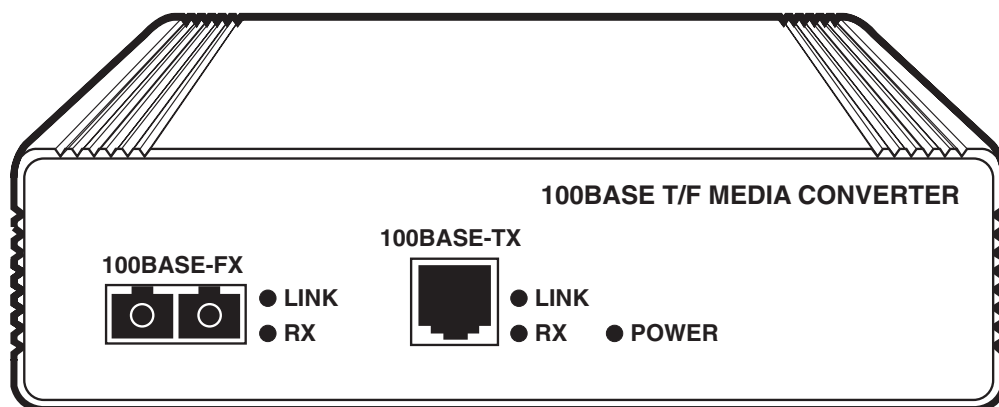


BLACK BOX[®]

NETWORK SERVICES

© Copyright 1999. All rights reserved.
Black Box Corporation.

Twister Media Converters



Get transparent translation between 100BASE-TX and multimode or single-mode 100BASE-FX segments, and extend your LAN farther than you ever thought possible!

Key Features

- ▶ *Transparent integration of twisted-pair and fibre optic Fast Ethernet segments.*
- ▶ *Multimode models support fibre distances up to 2 km (1.2 mi.) and come with either SC or ST connectors.*
- ▶ *Single-mode models have SC connectors and support 15- or even 40-km (9.3- or 24.8-mi.) fibre optic runs.*
- ▶ *Half- or full-duplex operation.*
- ▶ *The lowest throughput delay in the industry—15 bit-times—makes them virtually invisible to your network.*
- ▶ *Full-packet retiming maintains synchronisation at any supported distance.*

Are your 100BASE-TX segments or networks isolated from each other by distances that you just can't cross with copper wiring? Would you like to hook them together—without slowing them down with pokey, pay-the-phone-company WAN equipment? A pair of Twisters and some fibre cable will do the job nicely.

The Twisters are state-of-the-art media converters that translate the electrical signals on your copper 100BASE-TX networks to light pulses for transmission across a 100BASE-FX fibre link.

If the "gap" you need to cross between your segments is not wider than 2 km (1 mile) or so, you can use less-expensive multimode fibre cable with one of our two multimode Twister models. One of these models has ST connectors and one has SC connectors. (Any distance greater than 412 m [1350 ft.] will require that you operate in full-duplex.)

On the other hand, if you need to run cable halfway across a large campus or a small county, single-mode fibre optic cable is the way to go. The campus application calls for our regular single-mode Twister, which can drive optical signals as far as 15 km (9.3 miles). The cross-county-type application will require our "long haul" single-mode Twister, which can power optical signals up to 40 km (24.8 miles).

The Twisters can operate in either half-duplex up to 100 Mbps or full duplex up to 200 Mbps: Whatever format is detected on the copper side is

automatically used on the fibre side. (The regular Twisters do *not* translate half-duplex to full duplex; to do this, you'll need one of our SuperTwisters [LH1100A series].)

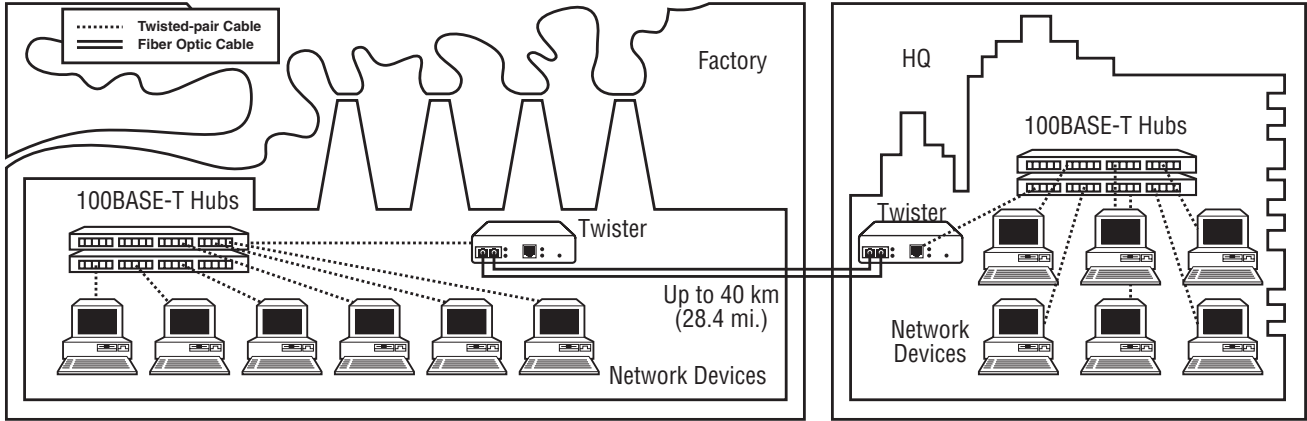
Add this to the full-packet retiming they perform; their simple, software-free installation and operation; and their lowest-in-the-industry throughput delay of 15 bit-times (about 150 nanoseconds), and you've got a machine that seamlessly, imperceptibly welds your Fast Ethernet network together—no matter how far apart the pieces are.

Typical Application

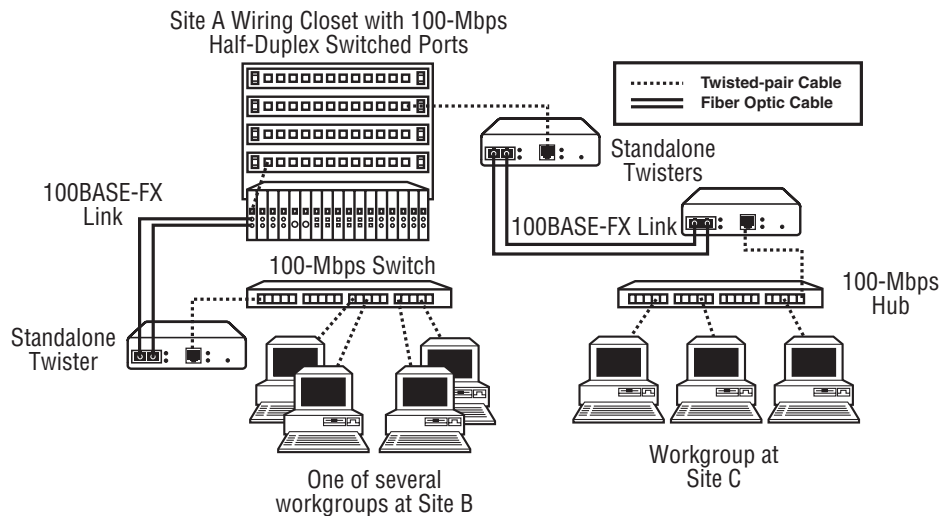
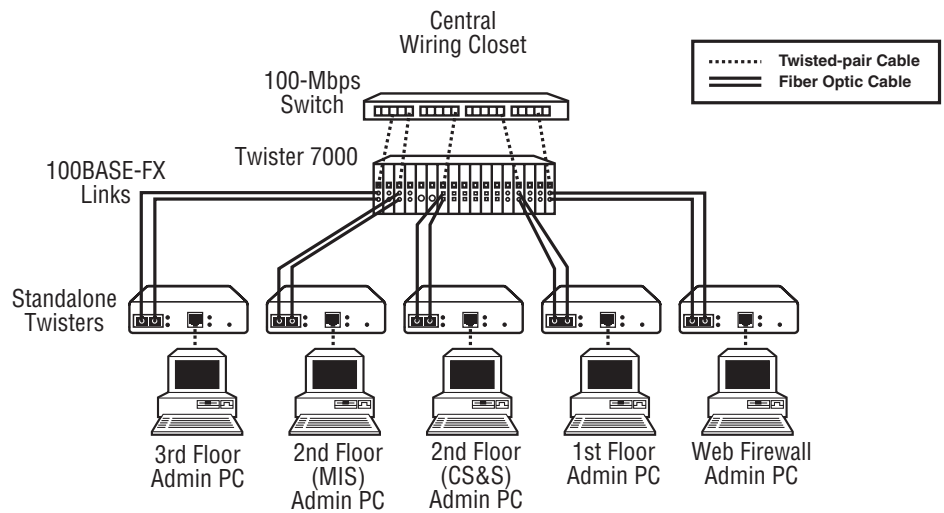
Run fibre between a pair of Twisters from your main 100BASE-TX network to the 100BASE-TX workgroup at your research lab down the road.

Run fibre from a Twister attached to each of your campus' 100BASE-TX networks to a central 100BASE-FX switch.

If you have to run 100-Mbps Ethernet farther than copper will go, Twisters will help you bridge the gap with fibre—even if it's a wide gap.



Use standalone Twisters with the Twister 7000 (our product code LE7300A) to create a centralised 100-Mbps administration system (above right) or a centralised 100-Mbps network for all of your local sites (below right).



Specifications

Standard — IEEE 802.3u: Copper: Section 25; Fibre: Section 26	LE1345 models: 2 km (1.2 mi.); LE1346A: 15 km (9.3 mi.); LE1346A-40KM: 40 km (24.8 mi.)
Interface — Copper: 100BASE-TX; Fibre: 100BASE-FX	User Controls — None; begins operating as soon as it's plugged in
Cable Type — Copper: Category 5 unshielded twisted pair; Fibre: LE1345 models: 50/125-µm, 62.5/125-µm, or 100/140-µm duplex multimode; LE1346 models: 8.3/125-µm, 8.7/125-µm, 9/125-µm, or 10/125-µm duplex single-mode	Indicators — (3) Front-mounted LEDs: (1) POWER; (1) 100BASE-TX LINK; (1) 100BASE-FX LINK
Impedance (Copper) — 100 ohms nominal	Connectors — 100BASE-TX ports (all models): Shielded RJ-45 female; 100BASE-FX ports: LH1345A; Duplex multimode ST female; LH1345A-SC; Duplex multimode SC female; LH1346 models: Duplex single-mode SC female
Signal-Level Output (Copper) — 2 to 2.8 Volts	Power — From external autosensing power supply: Input: 90 to 260 VAC, 50 or 60 Hz; Output: +5 VDC at 1.2 amps
Signal-Level Input (Copper) — 350 mV minimum	Temperature Tolerance — Operating: 0 to 55° C (32 to 131° F) Storage: -25 to +70° C (-13 to +158° F)
Wavelength (Optical) — All models: 1300 nm	Humidity Tolerance — 5 to 95% noncondensing
RX Input Sensitivity (Opt.) — LE1345 models: -31 dBm peak, minimum; LE1346A: -31 dBm peak; LE1346A-40KM: -35 dBm minimum	Enclosure — Metal
Output Power (Optical) — LE1345 models: Into 50-µm cable: -22.5 to -14 dBm; Into 62.5-µm cable: -19 to -14 dBm; LE1346A: -8 to -15 dBm peak, typical, into 9-µm cable; LE1346A-40KM: 0 to -5 dBm into 9-µm cable	Size — 4.7 x 9.7 x 11.4 cm (1.9"H x 3.8"W x 4.5"D)
Data Rate — 100 Mbps (half- duplex) or 200 Mbps (full- duplex)	Weight — 1.4 kg (3 lb.) including power supply
Maximum Distance — Copper (half-duplex): 100 m (328.1 ft.); Fibre: Half-duplex: 412 m (1350 ft); Full duplex:	

The complete package:

- The Twister itself.
- Its power supply.
- (4) Rubber mounting feet.
- A users' manual.

Additional equipment you might need:

- CAT5 cable for 100BASE-TX runs.
- Multimode or single-mode cable for 100BASE-FX runs.
- AC-power surge protectors or uninterruptible power supplies.
- Data-line surge protectors.

Ordering Information

PRODUCT NAME	PRODUCT CODE
Twister Media Converters:	
Multimode Fibre:	
SC Connectors, up to 2 km (1.2 mi.)	LE1345A-R3
ST Connectors, up to 2 km (1.2 mi.)	LE1345A-ST-R3
Single-Mode Fibre:	
SC Connectors, up to 15 km (9.3 mi.)	LE1346A-R3
SC Connectors, up to 40 km (24.8 mi.)	LE1346A-40KM-R2
OPTIONAL ACCESSORY	PRODUCT CODE
CAT5 Solid-Conductor Cable, 4 Pairs, Straight-Through-Pinned, PVC, 3.1 m (10 ft.)	EYN737MS-0010
Bulk Duplex Multimode Fibre optic Cable, PVC	EFN062
SC-SC Terminated Single-Mode Fibre optic Cable, PVC	EFN5010
Primary CAT5 Surge Protector (for use at the point where the 100BASE-TX line enters the building)	SP250A
Secondary CAT5 Surge Protector (for use at the point where each 100BASE-TX line is connected to the SuperTwister or the attached device)	SP251A
<i>If you would like a UPS or AC-power surge protector, please call Black Box Technical Support to discuss your requirements.</i>	