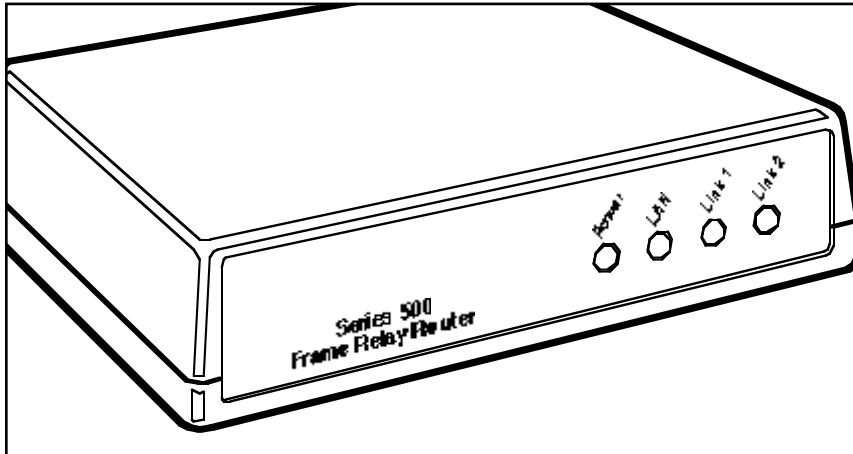




BLACK BOX[®]

NETWORK SERVICES

SERIES 500 BRANCH OFFICE FRAME RELAY ROUTER



Feature-loaded LAN-to-LAN or LAN-to-Internet routing over Frame Relay—at low cost.

Key Features

- ▶ **Supports a single V.35 WAN interface and includes one Ethernet LAN port and a single leased-lined connection**
- ▶ **Speeds data up to 2.048 mbps. Compresses data by a factor of six at speeds up to 256 kbps.**
- ▶ **Auto-learning and auto-configuration of link-management parameters.**
- ▶ **Comes with NetSAFE Firewall, a sophisticated security system that protects your network from intruders.**
- ▶ **Routes IP/IPX and bridges all non-routable protocols.**
- ▶ **Supports up to 20 DLCIs.**

The Series 500 Branch Office Frame-Relay Router is a powerful new low-cost solution for Ethernet LAN access to Frame-Relay networks.

Loaded with features, the Router supports a single V.35 trunk interface and includes an Ethernet LAN port and a single leased-line port. It is capable of establishing PPP-MP links over Frame Relay and sending uncompressed data at speeds up to 2.048 mbps. With software compression (available at data rates up to 256 kbps), you get a 600% throughput increase.

It also supports up to 20 Data-Link Connection Identifiers (DLCIs), allowing you to make up to 20 Frame-Relay links to various devices.

Some of the more important things that the Series 500 Router supports:

- IP/IPX™ routing protocols that will help you track internet transmissions and data moving between workstation programs running on different network nodes;
- T1/E1 link speeds;
- Bootstrap Protocol Relay Agent (BootP Relay)—essential for any robust client-server framework;
- Network management;
- Easy installation with the NetWizard Web-based interface.

The Router also comes with NetSAFE Firewall, which prevents intruders from entering your office's network through the Internet. It secures all of the stations on your local network

while still allowing access to your Web server.

In addition, you can use the router with the Frame-Relay equipment you currently use. It's designed to augment your Frame-Relay capabilities, not replace your initial investment.

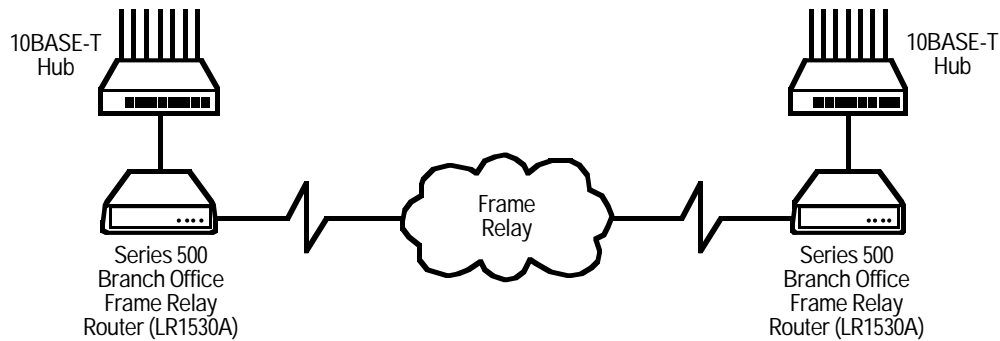
The Series 500 Router is also RFC 1490 compliant—it will work with other compliant products, no matter which vendor manufactured them, so Frame-Relay implementation incompatibilities are a thing of the past.

Because the Router uses PPP, your users will be able to get the same kind of robust Internet connection they would get by using a standard phone line and high-speed modem.

Typical Application

Give the networked users at your remote site the super-fast access they need to your company's extranet: Run at T1 speed over Frame Relay.

This makes Ethernet-over-Frame-Relay look simple. But with the Series 500 Router, it is.



Specifications

Compliance: FCC Part 15 Subpart J Class A; CE

Standard: IEEE 802.3 Ethernet

Interface: LAN: 10BASE-T MDI and MDI-X ports; WAN: V.35

Protocols: LAN: IP, IPX™; WAN: PPP-MP, Frame Relay

Filtering: Up to 14,000 packets per second

Data Rate: LAN: 10 mbps; WAN: Up to 2.048 mbps

Data Compression: Stac® LZS (increases throughput by 600%) at raw data rates up to 256 kbps

Network Management: SNMP, in-band management (Telnet), out-of-band management (built-in console)

Internet Security: Included NetSAFE Firewall

Indicators: (4) Front-mounted LEDs: Power, LAN, (WAN) Link 1, (WAN) Link 2

Temperature Tolerance: 2 to 50°C (35 to 122°F)

Humidity Tolerance: 20 to 80%, noncondensing

Maximum Altitude: 3048 m (10,000 ft.)

Power: From wallmount power supply: Input: 115 VAC, 60 Hz (230 VAC, 50 Hz also available); Output: 12 VDC, 1 Amp

Size: 4H x 15.5W x 11D cm (1.6"H x 6.1"W x 4.3"D)

Weight: 0.3 kg (0.7 lb.)

Fido Protection™: 1 year

Technically Speaking

The Branch Office Frame Relay Router provides all the features you need for Frame-Relay connectivity throughout your network.

Basic features include:

- IP/IPX routing and transparent bridging
- PPP (PPP-MP) over leased line
- 600% data compression
- T1/E1 link speeds
- Internet Feature Set
- Bootstrap Protocol Relay Agent (BootP Relay)
- Security
- Programmable filter
- Network management

Frame Relay features include:

- Multi-vendor inter-operability (RFC 1490)
- PPP encapsulation
- Support for up to 20 DLCIs
- LMI support for Annex A (ANSI), Annex D (CCITT), and LMI type
- Plug-and-play with default learning of LMI type
- Plug-and-play with auto-learning of DLCIs
- Congestion control (BECN/FECN)
- Compatibility for use in existing Frame Relay routing networks and with Athena routing-feature set

Ordering Information

ITEM	CODE
Series 500 Branch Office Frame Relay Router	LR1530A
Category 5 Stranded Patch Cable, 4-Pair, Beige, 3-m (10-ft.).....	EVMSL05-0010