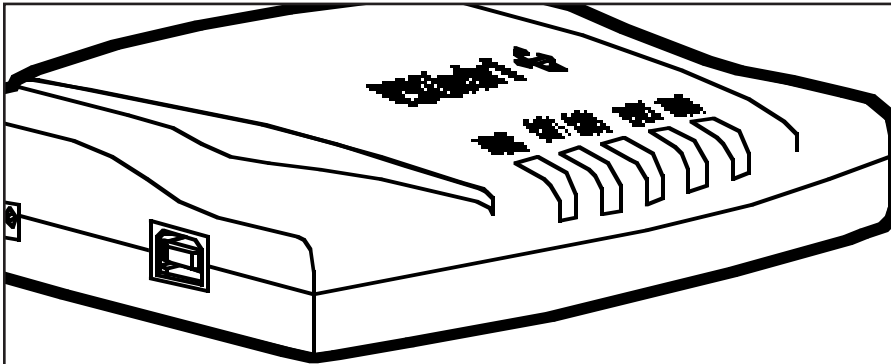


© 2000. All rights reserved.
Black Box Corporation.

BLACK BOX NETWORK SERVICES

USB DIRECTOR II



Connect up to three USB devices, one parallel device, and one serial device to a single USB port on your Windows 98 PC.

Key Features

- ▶ **Three state-of-the-art USB ports let you run multiple USB devices from one USB port.**
- ▶ **Or connect USB devices in tiers, one port up to the next bay.**
- ▶ **One standard IEEE-1284 parallel port enables you to connect a printer or other parallel device to the USB port on your PC.**
- ▶ **Use the RS-232 serial port on the Director to connect a serial device to the USB port on your PC.**

Make the most of the USB port on your Windows 98 PC with the USB Director II.

Featuring three USB ports, one parallel port, and one serial port, the Director lets you:

- run up to three USB devices from one USB port or connect USB devices in tiers, one port up to the next bay, *and*
- connect a printer or other parallel device *and*
- attach a serial device—all to a single USB port on your PC.

The Director complies with the latest USB specification—Rev. 1.0—and offers a standard IEEE-1284 parallel printer port. What's more, it supports the UHCI and OHCI specification.

A 16C550 FIFO UART chip ensures that your data passes through the Director quickly.

To use the USB Director you must have:

- Pentium-class CPU with USB port PC.
- One available USB type A (downstream) port.
- Windows 98.

The USB Director II comes complete with RS-232 modem control signals for the serial port. It also features over-current detection, protection, and recovery.

And a warning LED indicator alerts you of a fault or dummy USB port.

The IC139AE comes with a 220-VAC power supply which assists in powering devices and LEDs in the tiers.

For more information about the USB Director II, see the *Technically Speaking* section on page 2.

Install the drivers via easy-to-use Windows 98 Wizards—see the diagrams at right.

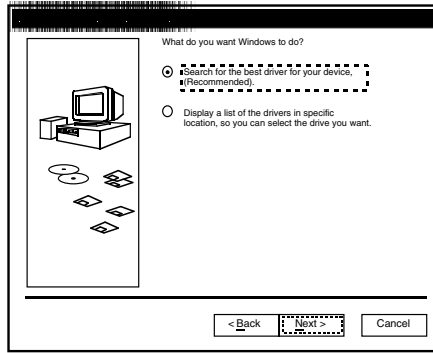


Figure 1. "What Do You Want Windows to Do?" screen.

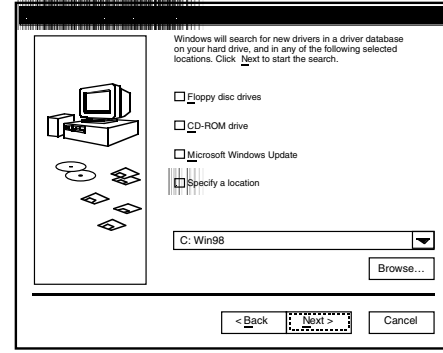


Figure 2. Searching for Drivers screen.

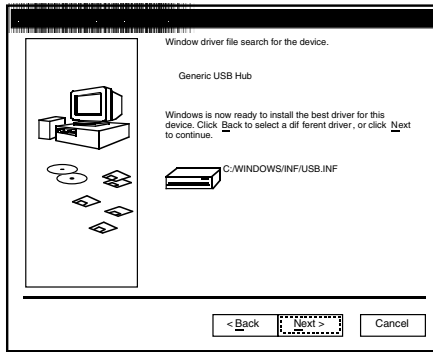


Figure 3. Driver File Search for Device screen.

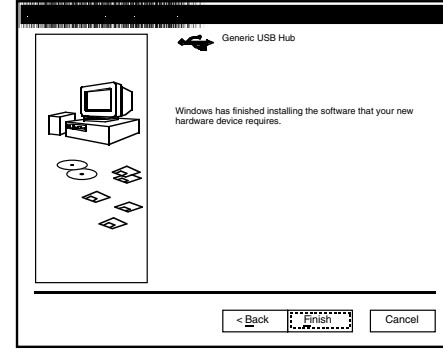


Figure 4. Driver Installation Finished screen.

Technically Speaking

The USB Director II is easy to install and use. Installing the hardware is plug-and-play; installing the software drivers is easy using the Windows menu-driven system.

Windows 98 guides you through driver installation procedures, one each for the Hub driver, RS-232 serial port driver, printer port driver, and COM port driver.

Once the drivers are installed, you're ready to go.

What the Package Includes

- USB Director II
- (1) 1.8-m (6-ft.) USB cable (AB type)
- (1) power adapter
- User's manual

Specifications

Data Rate—RS-232 interface: 9600 to 115.2 kbps

Distance—RS-232 interface: 50 ft. (15.2 m)

Temperature—Operating: 0 to 70°C (32 to 158°F); Storage: 0 to 85°C (32 to 185°F)

Indicators—(5) LEDs: (1) Power, (3) USB port, (1) USB Printer

Connectors—Interface A: (1) B Type USB, (3) A Type USB; Interface B:

(1) DB25 female parallel;
Interface C: (1) DB9 male RS-232

Power—Internal: From the RS-232 interface; External: 220 VAC

Size—3.8H x 14.2W x 8.9D cm (1.5"H x 5.6"W x 3.5"D)

Weight—1.1 kg

Ordering Information

ITEM	CODE
USB Director II, 220 VAC.....	IC139AE
<i>You may also want to order...</i>	
USB Cable, 0.9m (3ft.)	USB01-0003
USB Director (4-Port Hub)	IC134A