

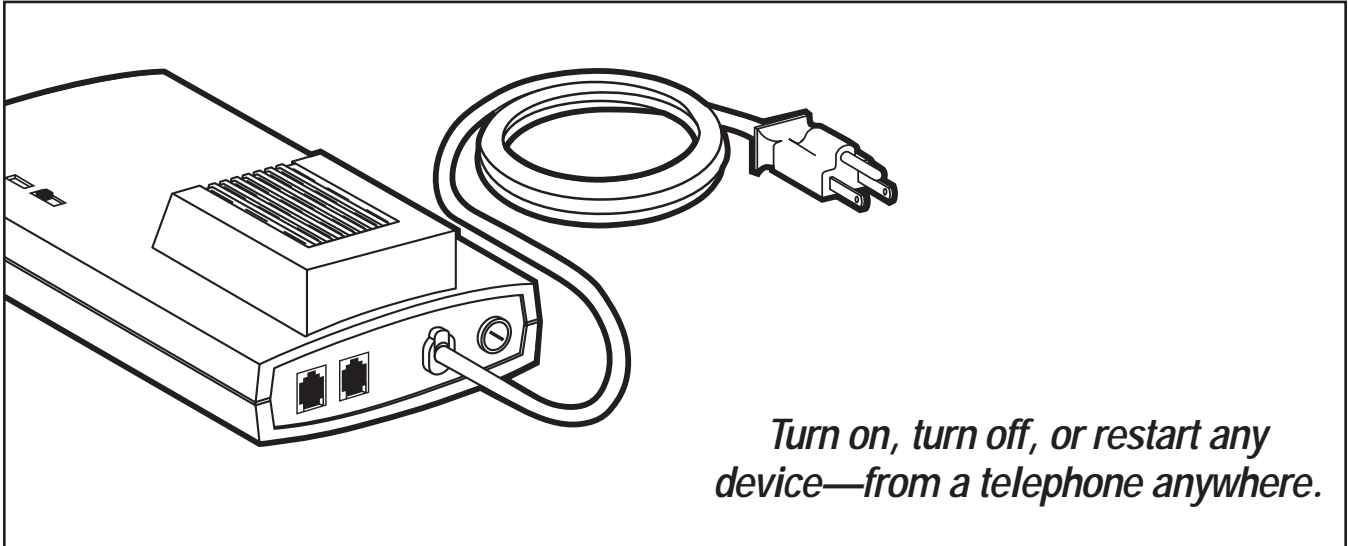


© 1999. All rights reserved.
Black Box Corporation.

BLACK BOX[®]

The World's Source for Cabling and Network ConnectivitySM

POWER MATE



Turn on, turn off, or restart any device—from a telephone anywhere.

Key Features

- ▶ **Hooks up to existing phone line—no need for additional line.**
- ▶ **Provides On/Off or Pulse-Power-Off remote or manual control, up to 10 A.**
- ▶ **Extension port connects with phone, fax, modem, or other telephone device for ring-through operation.**
- ▶ **Programmable dual-level security.**

The Power Mate allows you to remotely control the AC power to an attached device via any tone-dial (DTMF) phone. It plugs right into an existing phone line, so there's no need to invest in an additional or special line. Plus it includes an extension port so you can still plug in a telephone device (phone, modem, or fax) for use on the same line.

A recessed, three-position slide switch on the Power Mate unit allows for local or remote power control. Set it to On or Off to keep the attached device on or off with no power control from the phone line. Calls will go directly to the extension phone device, just as if the Power Mate were not there. In the Auto position, phone-line control is enabled and the power status stays in the previous switch-position mode (either On or Off) until changed remotely.

Remote Power Control

When the Power Mate is set for remote power control, you can control the power from any touchtone phone. You decide the number of rings before the Power Mate picks up an incoming call, the security level, and the method of passing a call on to the extension.

Power Mate offers four different call-answer modes. In all modes, the unit will answer and listen for a power-control code. When a code is received, the unit will respond with the AC power status and allow power-control commands to be entered. When you're through entering commands, the Power Mate will either ring the extension device or disconnect the call.

Normal Answer Mode: Power Mate answers the call and sends a "ringback" signal (so it sounds

like the phone is still ringing), waiting between rings for the command control code. If no tones are received after two ringbacks, the unit will either ring the extension port or disconnect the call according to the security level setting. This mode is recommended if voice or fax calls are regularly received on the incoming line and you don't want callers to know that a control device is present.

Answer-and-Prompt Mode: Upon answering, Power Mate sends three short beeps to prompt you to enter the command control code. After a six-second pause, if no code is received, Power Mate will either ring the extension port or disconnect the call, depending on the security setting. Use this mode for a more

Continued on Page Two

