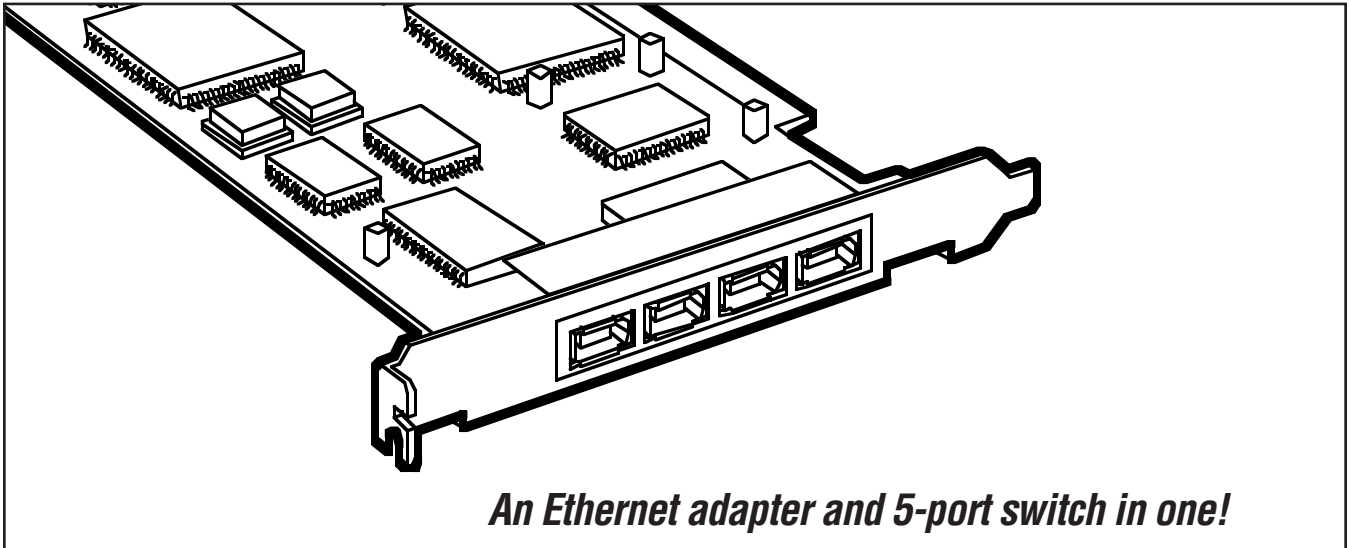


BLACK BOX[®]

NETWORK SERVICES

10/100 NICSWITCH



An Ethernet adapter and 5-port switch in one!

Key Features

- ▶ **Perfect for small- and mid-sized networks.**
- ▶ **Fits into a PCI slot on your PC server.**
- ▶ **Plug-and-play NICSwitch autosenses 10- or 100-Mbps operations and half- or full-duplex mode.**
- ▶ **Integrated 10/100-Mbps network interface card.**
- ▶ **Total bandwidth of up to 800 Mbps.**
- ▶ **Operates at maximum packet filtering and forwarding rates.**

Add a 5-port Ethernet switch and network interface card to your PC server via a single PCI slot!

The NICSwitch is a 10/100-Mbps network interface card with built-in switches consisting of RJ-45 twisted-pair ports. The switch ports can auto-sense 10- or 100-Mbps operations, as well as half- or full-duplex mode.

All ports can independently switch to another port to reduce network collision and speed up data transfer.

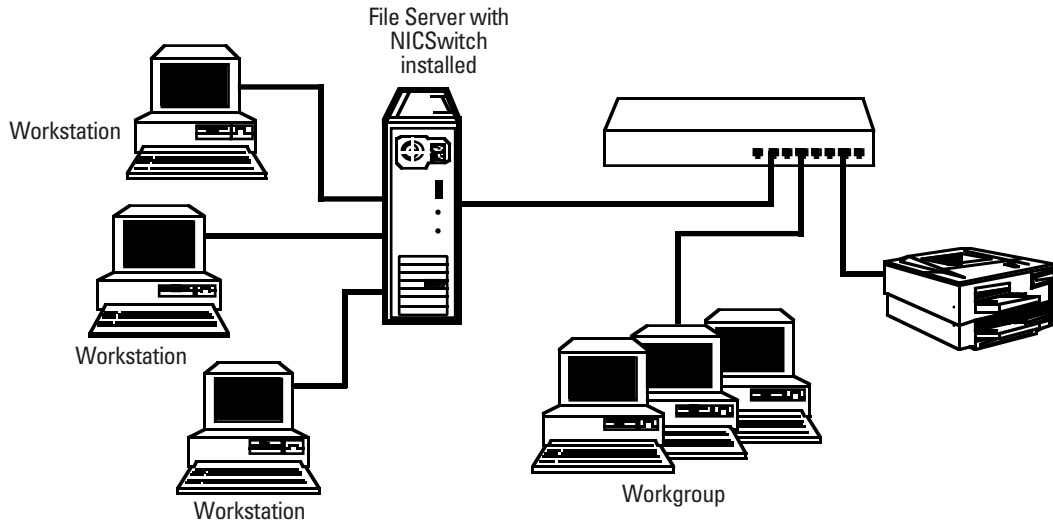
The indicator panel presents LED information on link and activity, full- or half-duplex mode, and 10- or 100-Mbps operation.

An included diskette contains the Intel[®] 21143 chip drivers for the various NOS (Networking Operating Systems). It works with Windows[®] 95, 98, 2000, or NT[®]; NetWare[®], SCO UNIX[®], and other network operating systems.

Automatic MAC address learning builds the routing information database. And the NICSwitch operates at a total bandwidth of 800 Mbps to give you maximum filtering and forwarding rates.

You can connect the NICSwitch to existing 10-Mbps or 100-Mbps hubs or switches. You'll need Category 3 or 5 twisted-pair Ethernet cable when connecting 10BASE-T devices to the NICSwitch. Use Category 5 (straight-through) twisted-pair Ethernet cable when connecting 100BASE-TX devices to the hub. Always limit the cable distances to 328 feet as defined by the IEEE specification.

Connect three PC workstations to the NICSwitch and expand to a workgroup hub.



Specifications

Access Method—CSMA/CD, 10 Mbps and 100 Mbps

Standards—IEEE 802.3 10BASE-T, IEEE 802.3u 100BASE-TX

Address Table—1000 entries

Data Rate—10 and 100 Mbps, half- and full-duplex

Filtering/Forwarding Rate—Line speed

Maximum Bandwidth—800 Mbps

Media Supported—10 Mbps: Category 3, 4, and 5; 100 Mbps: Category 5

Queue Buffer—1 MB

Interface—PCI

Connectors—(4) RJ-45

Indicators—(2) LEDs per port:

(1) Link/Activity/Speed, (1) Full-Duplex Mode, Collision

Temperature Tolerance—
Operating: 0 to 40°C; *Storage:* -40 to +70°C

Maximum Humidity—5 to 95% noncondensing

Power—5 VAC from the interface

Size—8.9 x 18 cm

Weight—0.1 kg

What the Package Includes

- (1) 10/100 NICSwitch
- (1) NIC driver diskette
- Users' manual

Ordering Information

| ITEM | CODE |
|------------------------|---------|
| 10/100 NICSwitch | LH1004C |

Remember to order cables...

| | |
|--|--------------|
| Category 5 Patch Cable, 100-MHz, 4-Pair, Straight-Pinned, PVC, Beige, 10-ft. (3-m) | EVMSL05-0010 |
|--|--------------|