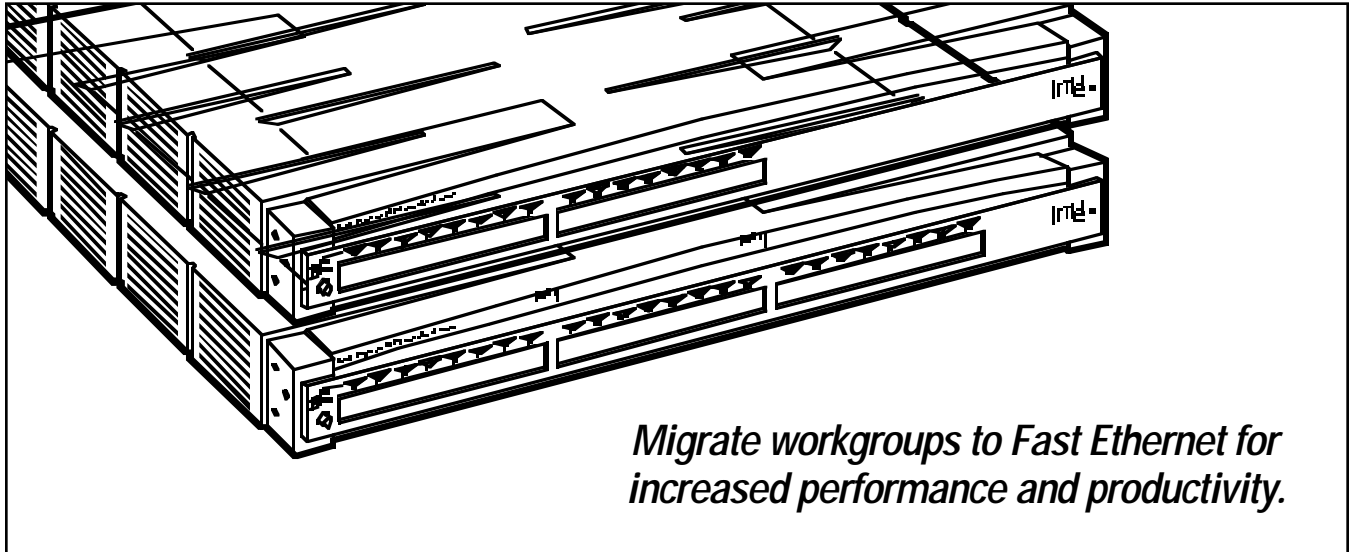




# BLACK BOX<sup>®</sup>

## NETWORK SERVICES

### INTEL EXPRESS 460T STANDALONE SWITCHES



#### Key Features

- ▶ **Dedicated 10/100-Mbps connections for better desktop performance.**
- ▶ **Traffic prioritization with 802.1p.**
- ▶ **Optional uplink modules let you connect to a high-speed backbone or switch.**
- ▶ **Intuitive management with Intel Device View and embedded web server.**
- ▶ **Standards-based VLANs with 802.1Q.**

Thanks to Intel<sup>®</sup> Express 460T Standalone Switches, now you can affordably migrate workgroups to switched Fast Ethernet workgroups. And, with one of the Intel Express 460T optional modules, you can connect to a Gigabit Ethernet or 100BASE-FX backbone, or extend your network to other floors or buildings.

The Switch lets you migrate workgroups and desktops from shared to switched networks, delivering Fast Ethernet performance where you need it. 16- and 24-port models with 10/100-Mbps auto-negotiating ports match speed, duplex, and flow control of all connected devices, so you can give users dedicated switched performance of either 10 or 100 Mbps on each port.

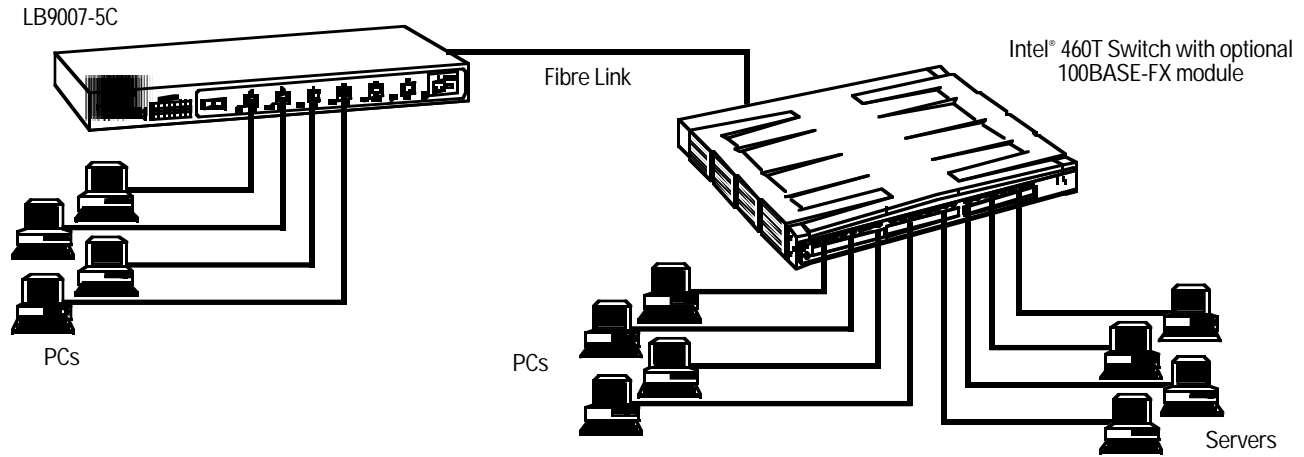
Built-in management means you spend less time at the switch. You can configure and monitor the Switch from your desktop using your favorite web browser, the Intel<sup>®</sup> Device View software, traditional in-band SNMP, out-of-band direct connection, or enterprise-level applications.

A single expansion-module slot lets you extend your network to other floors or buildings through an optional 100BASE-FX module. You can also uplink to a high-speed backbone or switch using the optional Gigabit Ethernet (1000BASE-SX) module.

What's more, the Switch fully complies with 802.1p Layer 2 prioritization. Two priority queues let you configure the Switch to forward traffic according to priority established at the port level. A firmware upgrade provides fully compliant 802.1Q

VLAN setup for standards-based VLAN, which reduces broadcast traffic and enhances security. And IGMP snooping lets individual ports join multicast sessions. This reduces the amount of traffic on your network by sending multicast traffic only to those who request it.

Perfect for increasing the number of ports in tight spaces, the Switch measures only one rackmount unit (1U) high. And since the 10/100-Mbps ports are auto-negotiating and auto-configuring, the Switch is easy to set up. For connected devices that do not auto-negotiate, the Switch lets you configure each switch port for speed, duplex, and flow control, so you won't have to reconfigure each connected device.



**Fast-Ethernet performance at the desktop is yours with an Intel® 460T switch. You can even uplink to Gigabit Ethernet or fibreoptic networks!**

## Specifications

### Standards Compliance —

Bridge/Spanning Tree (IEEE 802.1d), Fast Ethernet (IEEE 802.3u), Auto-negotiation (IEEE 802.3x), SMI (RFC 1155), SNMP (RFC 1157), MIB II (RFC 1213), Ethernet-like MIB (RFC 1643), Bridge MIB (RFC 1493), RMON (RFC 1757), ICMP (RFC 792), TCP (RFC 793), ARP (RFC 826), Telnet (RFC 854), TFTP (RFC 783), UPD/IP (RFC 768.791.1071), BootP (RFC 951/906/1350)

### Interface Options — (16) or (24)

10/100BASE-TX on base units, (2) 100BASE-FX fibre Ethernet ports on optional fibre module, (1) 1000BASE-SX Gigabit Ethernet port on optional Gigabit module

### Basic Performance —

MAC Addresses: 12,000;

Buffer Size: 16-port model: 8 MB; 24-port model: 12 MB;

Backplane: 9.6 Gbps;

Forwarding Mode: Store and Forward

### Network and Traffic Control —

IEEE 802.3x active flow control, backpressure, 802.1p prioritization, 802.1Q VLANs, IGMP snooping, Spanning Tree Protocol

### Management — Intel Device View

(Web or Windows®), RMON groups 1–3, 9, SNMP v1, Config Wizard, Traffic Analysis (user-defined graphs), port mirroring

### Connectors — (16) or (24) shielded

RJ-45 for 10/100BASE-TX ports; Optional Fibre Module: (2) SC; Optional Gigabit module: (1) SC; Console port: RS-232 DB9 male

### Maximum Cabling Distance —

10 Mbps switch to switch, hub, or adapter: Category 3, 4, or 5 shielded/unshielded, 328 ft. (100 m);

100 Mbps switch to switch, hub, or adapter: Category 5 shielded/unshielded, 328 ft. (100 m);

100 Mbps fibre switch to switch or hub (62.5/125 micron fibreoptic): 525 ft. (160 m) half-duplex, 6560 ft. (2 km) full-duplex;

1000 Mbps fibre switch to switch (62.5/125 micron fibreoptic): 721 ft. (220 m);

1000 Mbps fibre switch to switch (50/125 micron fibreoptic): 1804 ft. (550 m)

### Temperature Tolerance —

Operating: 0 to 40°C (32 to 104°F); Storage: -10 to +63°C (14 to 145°F)

### Maximum Relative Humidity —

Less than 85%, noncondensing

### Installation Options — Table-top or rackmount (1U high)

### Power — 47-63 Hz

Size — 4.3H x 44.2W x 33D cm (1.7"H x 17.4"W x 13"D)

### Weight — 3.6 kg (8 lb.)

## Ordering Information

ITEM	CODE
Intel® Express 460T Standalone Switches	
16-Port.....	ES460TX16
24-Port.....	ES460TX24
Intel® Express 460T Optional Modules	
100BASE-FX .....	ES460MFX
1000BASE-SX Gigabit.....	ES460MSX