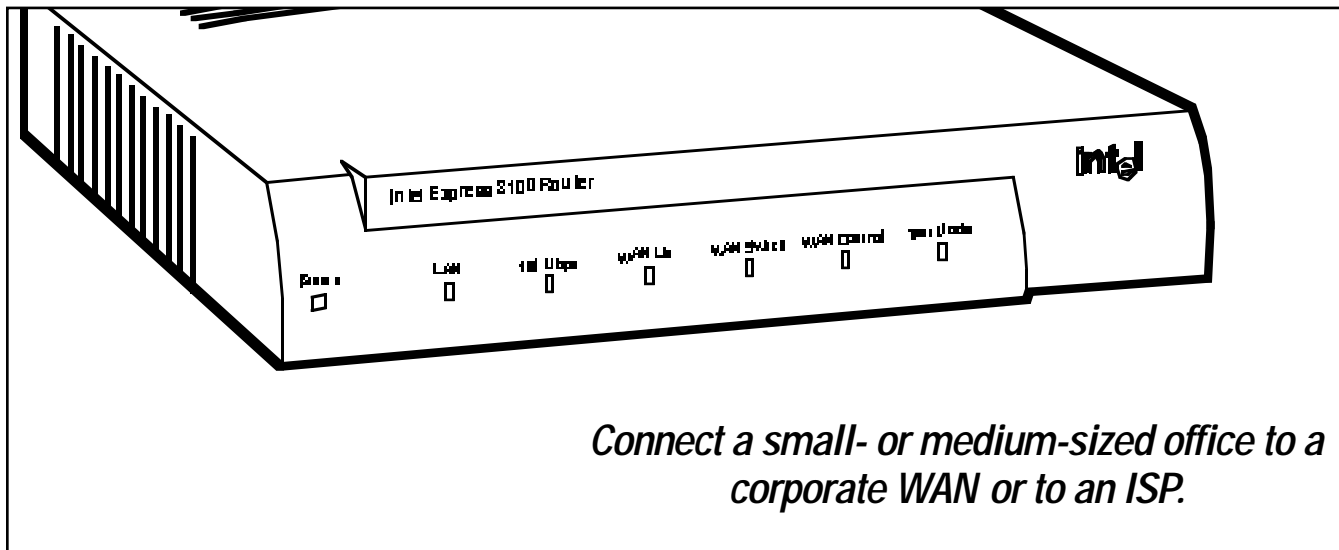




BLACK BOX[®]

NETWORK SERVICES

INTEL EXPRESS 8100 ROUTERS



Key Features

- ▶ **One LAN port and one WAN port let you connect an ISDN BRI or serial interface WAN to your workgroup LAN.**
- ▶ **Up to 60 links per Router.**
- ▶ **Autosensing 10/100-Mbps LAN port integrates Ethernet and Fast Ethernet networks.**
- ▶ **ISDN BRI port comes with S/T or U interface.**
- ▶ **Advanced ISDN cost-control mechanisms.**

The Intel[®] Express 8100 Routers give your branch offices quick and easy access to the Internet and your corporate LAN. Featuring one LAN and one WAN port, these routers are reliable and cost-effective.

For simple Internet access, the Routers support Network Address Translation (NAT), including Single IP and Dynamic IP. The Routers also support PPP and D-Channel Callback, which may be required by Internet Service Providers (ISPs) to connect to their networks.

For LAN-to-LAN internetworking, the Routers support an advanced set of LAN and WAN routing protocols, which make them ideal for connecting branch offices.

The Routers support industry-wide standards for routing, WAN protocols, and compression. And you get maximum data throughput, thanks to the Router's use of IPX[™]/SPX spoofing, Triggered RIP, and controlled bridging.

Models are available for Frame Relay or ISDN BRI (S or U interface). Each Router features an autosensing 10/100-Mbps LAN port so you can integrate Ethernet and Fast Ethernet networks.

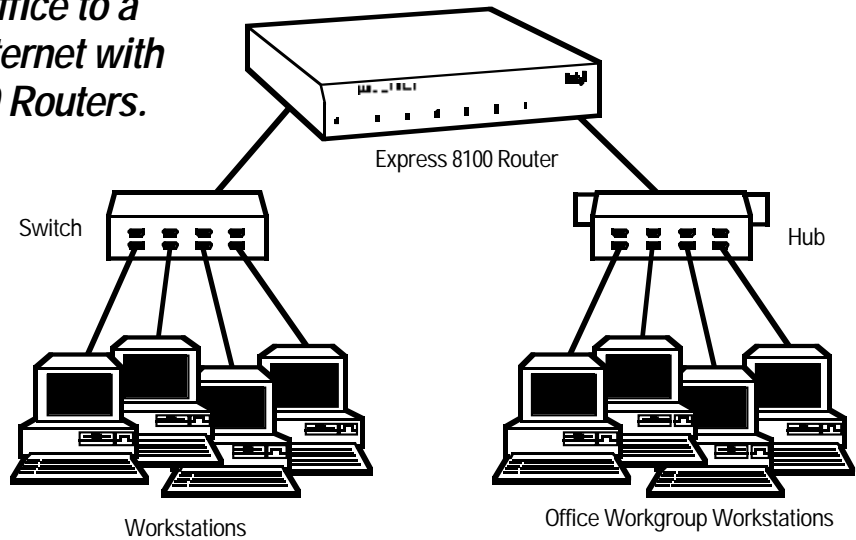
Your data's secure with the Routers. Each supports PAP and CHAP protocols for PPP links between routers. And PPP Callback protocol allows only authorized ISDN and analog dial-up WAN connections. What's more, its IP and IPX filters are tightly defined.

If you choose one of the ISDN models, you'll get cost-effective ISDN connection controls, including AO/DI, D-Channel Callback, and PPP Callback.

Software management is easy with the Routers. You choose the interface: IDV for Windows[®] or Web, Telnet, or command line. And deploy multiple routers fast with the TFTP mass deployment tool.

And since they support industry-wide standards (HDLC, CSMA/CD, LLC, and IEEE 802.3), the Routers are compatible with the existing equipment in your LAN or WAN.

Connect your branch office to a corporate LAN or the Internet with the Intel® Express 8100 Routers.



Specifications

Bridging—IEEE 802.1D, IEEE 802.1G

Compression—Software-based LZS Stac

Filtering—Static for IP, IPX™, and MAC

Forwarding Rate (LAN to WAN)—
ER8100UUS: 550 pps;
ER8100FRUS: 6800 pps

Frame Relay Standards—
ER8100FRUS: ANSI T1.606, ANSI T1.606 Add. 1, ANSI T1.617-DSS1, ANSI T1618-DSSI, FRF.1, FRF.3, FRF.9, CCITT I.233.1, CCITT I.370, CCITT Q.922, Multiprotocol

ISDN Standards—ER8100UUS:
National ISDN 1, National ISDN 2, AT&T®, Nortel® DMS-100, EuroISDN (ETSI), Austel TS013, Permanent ISDN, X.31, AO/DI

Management—Intel Device View management software for Windows® or Web, menu-based Telnet® management, configuration using TFTP, SNMP

Maximum Number of DLCIs Supported—4

Memory—4 MB Flash, 1 MB DRAM, Flash PROM preloaded with router software (self-booting)

PPP Standards—PPP LCP, PPP ML, PPP STAC Compression, PPP Compression, PPP over ISDN (ISDN models only), PPP Microsoft® Callback Control, AO/DI (ISDN models only)

Routing Protocols—*IP*: Static, RIP 1, RIP 2, Triggered RIP; *IPX*: Static RIP, SAP, IPXWAN2; Transparent bridging; Spanning Tree Protocol; IGMP version 2; DVMRP version 3; RSVP

Security—NAT, Single and Dynamic IP, PPP PAP and CHAP authentication

Standards—HDLC (1507776), CSMA/CD (ISO 8802/3), LLC (ISO 8802/2), IEEE 802.3

Traffic Management—RSVP, IP Multicast, Frame Relay prioritization, Frame Relay flow control

X.25 Standards—ER8100FRUS: ITU-T X.121, X.25 ISO/IEC 7776, ISO/IEC 8208

Interface—All: (1) RJ-45 auto-sensing 10BASE-T/100BASE-TX; ER8100UUS: ISDN U; ER8100FRUS: (1) proprietary interface supporting X.21/V.11, V.24/V.28, V.35, or V.36

Approvals—CE, except ER8100UUS

Power—100 to 240 VAC, 50 to 60 Hz, autosensing

Size—4.1H x 23.9W x 21.1D cm (1.6"H x 9.4"W x 8.3"D)

Weight—1.2 kg (2.6 lb.)

Ordering Information

ITEM	CODE
Intel Express 8100 Routers	
<i>For Frame Relay over a leased line, order...</i>	
Frame Relay, PPP Leased Line	ER8100FRUS
<i>For ISDN, order...</i>	
ISDN BRI	
S/T Interface	ER8100STUS
U Interface.....	ER8100UUS
<i>To connect a router to a CSU/DSU, order one of these cables...</i>	
Interface Cables for Intel Express 8100 Routers	
V.24 (RS-232) DTE	ER0001CB
V.35 DTE	ER0002CB
V.36 (EIA-449) DTE.....	ER0003CB
X.21/V.11 DTE.....	ER0004CB
T1 (DB15 Female to DB15 Male)	ER0005CB