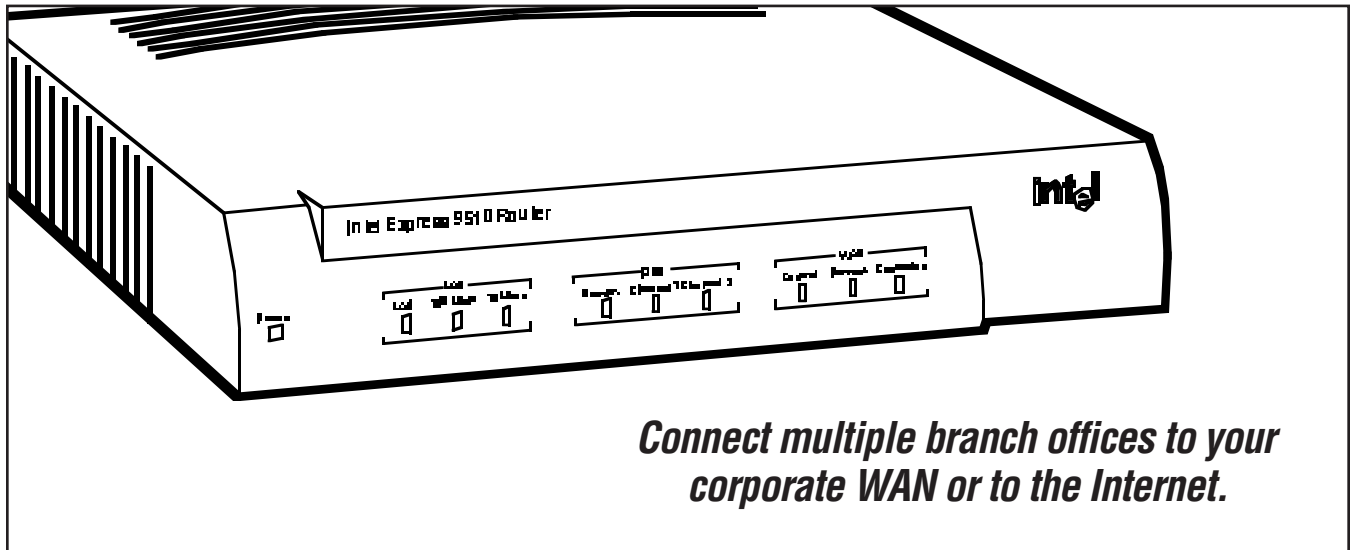


# BLACK BOX<sup>®</sup>

## NETWORK SERVICES

### INTEL EXPRESS 9500 SERIES ROUTERS



#### Key Features

- ▶ **Replace high-cost dedicated lines with lower cost connections to the Internet.**
- ▶ **16 MB of flash memory and 32 MB of DRAM.**
- ▶ **Manage via IDV for Windows<sup>®</sup> or Web, Telnet, or command-line interface.**
- ▶ **Supports industry-wide standards for routing, WAN protocols, and compression.**
- ▶ **Advanced traffic management.**

The Intel<sup>®</sup> Express 9500 Series Routers provide remote-site access for multiple branch offices.

These powerhouse Routers feature up to 16 MB of flash memory and 32 MB of DRAM. Choose from three models:

- 9510 gives you a 10/100 LAN connection, a WAN connection, and an S/T or U interface ISDN.
- 9515 provides a 10/100 LAN connection, a 10BASE-T connection, a WAN connection, and an S/T or U interface ISDN
- 9520 comes with a 10/100 LAN connection, an S/T or U interface ISDN, and a built-in CSU/DSU for connection to the WAN.

Each model supports up to 60 links for multiple branch-office connections.

The Routers reduce WAN costs with hardware-based compression at up to 2 Mbps per WAN port.

The Routers also offer advanced traffic management with IPX/SPX spoofing, Triggered RIP, RSVP, Single and Dynamic IP, IP Multicast, and Frame Relay Flow Control.

You can run a different WAN service on each of the two WAN ports or the emergency backup links, for simultaneous routing between multiple sites using different protocols, and for extra bandwidth as needed.

What's more, the Routers work with Intel Device View for Windows (included) and Web, which includes SNMP management. You can completely configure, manage, and update the router over the WAN from a

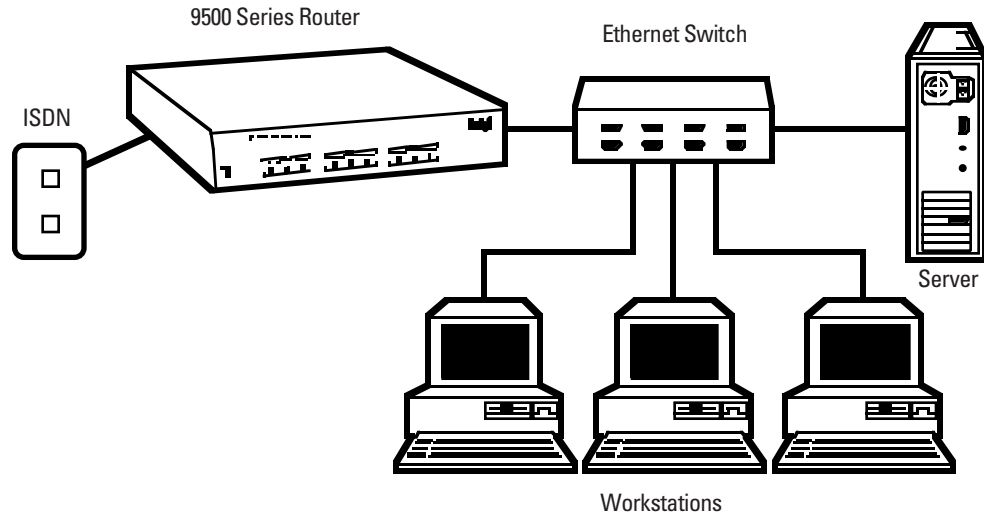
central location via a console—no on-site support required!

And the Routers keep your data secure. Each supports PAP and CHAP protocols for PPP links between routers. PPP Callback protocol allows only authorized ISDN and analogue dialup WAN connections.

You can even physically separate your public servers from your private corporate WAN. When combining with advanced packet filtering capabilities, you can easily build de-militarized zones (DMZs).

The Routers also offer ISDN cost-control features: Always On/Dynamic ISDN, D Channel Callback and P Channel Callback.

## Typical Application



## Why Buy From Black Box? Exceptional Value. Exceptional Tech Support.

Recognise any of these situations?

- You wait more than 30 minutes to get through to a vendor's tech support.
- The so-called "tech" can't help you or gives you the wrong answer.

- You don't have a purchase order number and the tech refuses to help you.

According to a recent survey by Data Communications magazine, 90% of network managers surveyed say that getting the technical support they need is extremely important when choosing a vendor. But even though network managers

pay anywhere from 10 to 20% of their overall purchase price for a basic service and support contract, the technical support and service they receive falls far short of their expectations—and certainly isn't worth what they paid.

At Black Box, we guarantee the best value and the best support. You can even consult our

Technical Support Experts before you buy if you need help selecting just the right component for your application.

Don't waste time and money—call Black Box today.

# Specifications

**Bridging**—IEEE 802.1D, IEEE 802.1G

**Compression**—LZS Stac compression chip H1/fn 9710

**CSU/DSU Standards**—*ER9520*: ANSI T1.403-1995, AT&T® TR 54016, AT&T TR 62411

**Filtering**—Static for IP, IPX™, and MAC

**Forwarding Rate**—*ER9510*: 10,000 pps (LAN to WAN); *ER9515*: 29,000 pps (LAN to LAN); *ER9520*: 10,000 pps (LAN to WAN)

**Frame Relay Standards**—ANSI T1.606, ANSI T1.606 Add. 1, ANSI T1.617-DSS1, ANSI T1.618-DSS1, FRF1.1, FRF.3, FRF.9, CCITT I.233.1, CCITT I.370, CCITT Q.922, Multiprotocol

**ISDN Standards**—National ISDN 1, National ISDN 2, AT&T, Nortel® DMS-100, EuroISDN (ETSI),

Austel TS013, Permanent ISDN, X.31, AO/DI

**Management**—Intel Device View management software for Windows® or Web, menu-based Telnet™ management, configuration using TFTP, SNMP

**Maximum Number of DLCIs Supported**—60

**Memory**—16 MB Flash, 32 MB DRAM, Flash PROM preloaded with router software (self-booting)

**PPP Standards**—PPP LCP, PPP ML, PPP STAC Compression, PPP Compression, PPP over ISDN, PPP Microsoft® Callback Control, AO/DI

**Routing Protocols**—IP: Static, RIP 1, RIP 2, Triggered RIP; IPX: Static RIP, SAP, IPXWAN2; Transparent

bridging; Spanning Tree Protocol; IGMP version 2; DVMRP version 3; RSVP

**Security**—NAT, Single and Dynamic IP, PPP PAP and CHAP authentication

**Standards**—HDLC (1507776), CSMA/CD (ISO 8802/3), LLC (ISO 8802/2), IEEE 802.3

**Traffic Management**—RSVP, IP Multicast, Frame Relay prioritization, Frame Relay flow control

**X.25 Standards**—ITU-T (CCITT) X.121, X.25 ISO/IEC 7776, ISO/IEC 8208

**Interface**—*All*: (1) DB9 console port (cable included); *ER9510*: (1) RJ-45 autosensing 10BASE-T/100BASE-TX, (1) ISDN S/T or U, (1) proprietary interface supporting X.21/V.11, V.24/V.28,

V.35, or V.36 by use of an adapter cable (ordered separately); *ER9515*: (1) RJ-45 autosensing 10BASE-T/100BASE-TX, (1) 10BASE-T, (1) ISDN S/T or U, (1) proprietary interface supporting X.21/V.11, V.24/V.28, or V.36 by use of an adapter cable (ordered separately); *ER9520*: (1) RJ-45 autosensing 10BASE-T/100BASE-TX, (1) ISDN S/T or U, (1) integrated CSU/DSU with included DB15 and RJ-48C adapters

**Approvals**—ER9510ST, ER9515ST: CE

**Power**—100 to 240 VAC, 50 to 60 Hz, autosensing

**Size**—4.1H x 23.9W x 21.1 cmD (1.6"H x 9.4"W x 8.3"D)

**Weight**—1.2 kg (2.6 lb.)

## What the Package Includes

- Intel Express 9500 Series Router
- DeviceView for Windows software
- Users' manual

## Additional Items You May Need

- Interface cables

## Ordering Information

ITEM	CODE
Intel Express 9500 Series Routers	
9510	
with ISDN BRI/ST .....	ER9510ST
with ISDN BRI/U .....	ER9510U
9515	
with ISDN BRI/ST .....	ER9515ST
with ISDN BRI/U .....	ER9515U
9520	
with ISDN BRI/ST .....	ER9520ST
with ISDN BRI/U .....	ER9520U

*To connect a router to a CSU/DSU, order one of these cables...*

Interface Cables for Intel Express 9500 Series Routers	
V.24 (RS-232) DTE .....	ER0001CB
V.35 DTE .....	ER0002CB
V.36 (EIA-449) DTE .....	ER0003CB
X.21/X.11 DTE .....	ER0004CB
T1 (DB15 female to DB15 male) .....	ER0005CB



Black Box offers the best warranty program in the industry—Fido Protection®. For more information, request **FaxBack 22512**.