



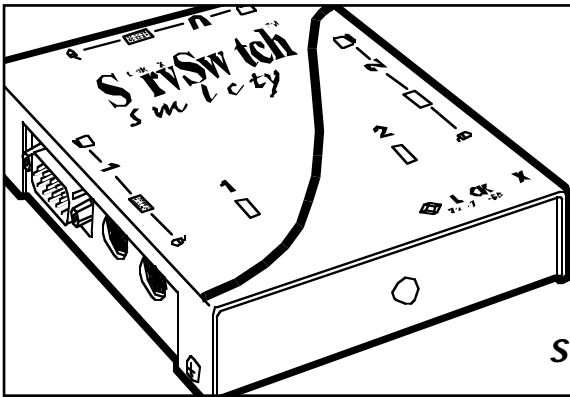
BLACK BOX[®]

NETWORK SERVICES

© 2003. All rights reserved.
Black Box Corporation.

Black Box Network Services • 464 Basingstoke Road • Reading, Berkshire, RG2 0BG • Tech Support: 0118 965 6000 • www.blackbox.co.uk • e-mail: techhelp@blackbox.co.uk

SERVSWITCH™ SIMPLICITY



Using one monitor, keyboard, and mouse to switch between two PCs has never been easier.

Key Features

- ▶ **Control two desktop PCs from a single monitor, keyboard, and mouse.**
- ▶ **Tiny but rugged case can be placed almost anywhere.**
- ▶ **Switch by pressing a button or typing a two-character command.**
- ▶ **Needs no AC power—It draws its power from the attached computers.**
- ▶ **Can scan between the computers.**
- ▶ **Supports resolutions up to 1024 x 768 at up to 85 Hz.**
- ▶ **Supports wheel mice.**
- ▶ **LEDs show which computer is selected.**

There are a lot of keyboard/video/mouse switches out there that you can use to control a pair of PCs with a single monitor, keyboard, and mouse. But a lot of them are almost as bulky as the second monitor they're replacing. And quite a few of them are way more complicated than most people need or want.

Maybe you should consider the ServSwitch Simplicity. It's designed to handle a pair of IBM® PC type desktop (not laptop) CPUs, just like those bigger switches. But it's only 3 cm (1.2 inches) thick and 9.1 x 10.7cm (3.6 x 4.2 inches) square—smaller than most paperback books. You can either set it on your desk or stick it on a wall or other surface, out of the way. Even so, its tough metal case can take the bumps and jolts of everyday offices.

Attaching your equipment is simple—just check out the pictures on the next page. Your monitor, keyboard, and mouse plug right in. You only need one cable to attach each PC CPU: Use

our handy KVM-extension cable, which has bonded keyboard, video, and mouse strands—no tangling or mismatching cords! It comes in a regular variety that's good for most applications, and a coaxial variety for better video.

If you order the full ServSwitch Simplicity Kit (product code SW613A-K), you'll get two of the regular cables with the Switch. If you order just the Switch itself (SW613A), you can get the cables separately in either regular (EHN403-0008) or coax (EHN235) versions.

It's so easy to operate, anyone can do it. To switch from one computer to the other, either (a) press the button on the Simplicity, or (b) press one of the [Ctrl] keys on your keyboard twice. That's all there is to it. Even "scanning" between the computers is easy: To have the Simplicity continuously display the video output of each computer for five seconds at a time, press the two [Shift] keys on your keyboard one after the other.

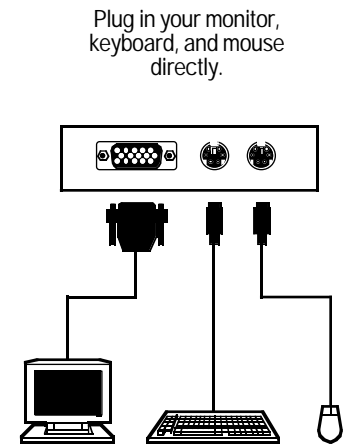
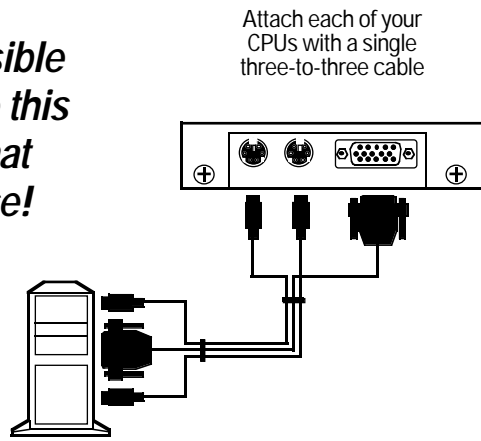
Press the space bar to stop the scan.

The Simplicity gets all the power it needs from the attached computers, so it doesn't need to be plugged in to AC power. You also don't need to configure it. Both of the attached PCs can boot up at the same time, and the Simplicity remembers their Num Lock, Caps Lock, and Scroll Lock settings as you switch back and forth between them.

Don't worry that you'll have to use the lowest possible resolution on your monitor, either. The Simplicity supports video resolutions as high as 1024 x 768 at refresh rates up to 85 Hz. And it supports the Microsoft® IntelliMouse® and other makes of "wheel" mice too.

If you place the Simplicity where you can see its top panel, its two LED indicators will show you which computer CPU is selected during normal operation. In scan mode, they'll show you which PC's video is being displayed.

The simplest possible connections make this a KVM switch that everyone can use!



Specifications

Standards: VGA, SVGA, or XGA video

Interfaces:
Video: VGA;
Keyboard and mouse: IBM PS/2* compatible

Resolution: Up to 1024 x 768 noninterlaced at up to 85 Hz

Scan Interval: In autoscans mode, pauses at each computer for 5 seconds

Maximum Distance: 3 m (10 ft) from the Switch to any attached device

User Controls:
Keyboard commands:
(1) Front-mounted SELECT pushbutton for switching between computers

Indicators: (2) Top-mounted "selected computer" LEDs

Connectors: All side-mounted:
For user equipment:
(1) HD15 female for monitor attachment;
(2) 6-pin mini-DIN female for keyboard and mouse attachment;

For each computer:
(1) HD15 male for video attachment;
(2) 6-pin mini-DIN female for keyboard and mouse attachment

Maximum Altitude: 3048 m (10,000 ft.)

Temperature Tolerance:
Operating: 5 to 40°C (41 to 104°F);
Storage: -20 to +60°C (-4 to +140°F)

Humidity Tolerance: 5 to 80% noncondensing

Enclosure: Steel

Power: 5 VDC from attached CPUs' keyboard interfaces

Size: 3 x 9.1 x 10.7 cm (1.2"H x 3.6"W x 4.2"D)

Weight: 340 g (12 oz.)

The Complete Package

The ServSwitch Simplicity (SW613A) comes with:

- The Switch itself.
- Two hook-and-loop mounting strips for surface-mounting.
- Four adhesive rubber feet for standalone operation on a desktop.
- A manual.

The ServSwitch Simplicity Kit (SW613A-K) comes with all of the above plus a pair of cables:

- (2) 2.4-m (8-ft.) regular-type three-to-three KVM-extension cables.

On one end these cables have connectors that plug into the video, keyboard, and mouse ports on the computer's CPU. On the other end, these cables have connectors that plug into the matching video, keyboard, and mouse CPU ports on the Switch.

Ordering Information

ITEM	CODE
ServSwitch Simplicity	
2-Port	SW613A
4-Port	SW612A
* Both include (4) rubber feet and (2) VELCRO hook-and-loop mounting strips	
ServSwitch Simplicity Kit.....	SW613A-K
* Includes (1) 2-Port ServSwitch Simplicity and (2) standard 3-in-1, 2.4-m CPU cables (EHN403-0008)	
ServSwitch Simplicity CPU cables	
Standard 3-in-1, 2.4-m.....	EHN403-0008
Coax 3-in-1, 3.0-m.....	EHN235-0010