



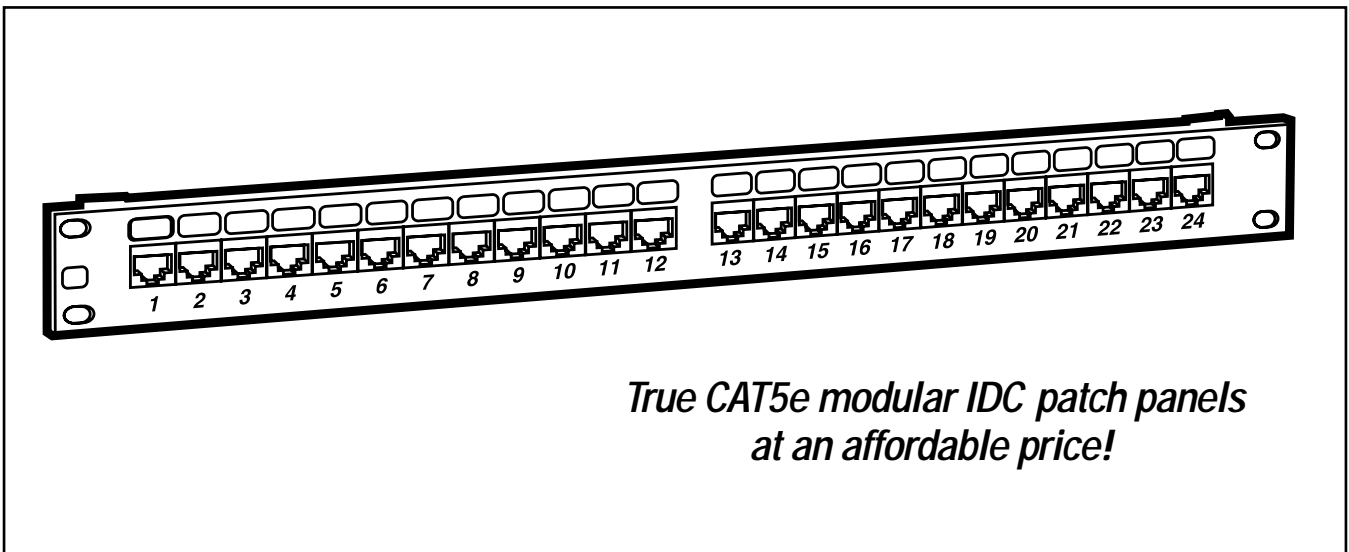
BLACK BOX[®]

NETWORK SERVICES

© 2004. All rights reserved.
Black Box Corporation.

Black Box Network Services • 464 Basingstoke Road • Reading, Berkshire, RG2 0BG • Tech Support: 0118 965 6000 • www.blackbox.co.uk • e-mail: techhelp@blackbox.co.uk

CAT5E ECONO PATCH PANEL



*True CAT5e modular IDC patch panels
at an affordable price!*

Key Features

- ▶ **Meets CAT5e performance requirements.**
- ▶ **Backward-compatible with Category 5 components.**
- ▶ **Termination for either T568A or T568B wiring.**

The CAT5e Econo Patch Panel features a 110 punch on the rear and RJ-45 female connectors on the front. The patch panel also has a universal wiring label in the rear so you can correctly punch down the UTP cable.

These uniquely engineered circuit boards and components meet CAT5e performance requirements specified by

ANSI/TIA/EIA-568A-5 for connecting hardware to 100 MHz.

Each CAT5e panel can be terminated for either T568B or T568A wiring configurations.

NOTE: There is no colour marking on the 110 clips on the patch panel. The universal wiring label is the only way to identify the pairs.

What's Included

- (1) CAT5e Econo Patch Panel, RJ-45 to Universal Wiring (12-, 24-, or 48-Port)
- (2) cable ties
- (4) 10/32" cup-head screws and nuts

Specifications

Material: Aluminum with black polycarbonate overlay

Standards: ANSI/TIA/EIA-568A-5 for CAT5e

Connectors: All: (1) 110 punch;
JPM224A: (12) RJ-45 female;
JPM225A: (24) RJ-45 female;
JPM226A: (48) RJ-45 female

Size: JPM224A, JPM225A: 1.75"H (1U) x 19"W (4.4 x 48.3 cm);
JPM226A: 3.5"H (2U) x 19"W (8.9 x 48.3 cm)

Weight: 1 lb. (0.5 kg)

Ordering Information

| ITEM | CODE |
|--|---------|
| CAT5e Econo Patch Panel, RJ-45 to Universal Wiring | |
| 12-Port | JPM224A |
| 24-Port | JPM225A |
| 48-Port | JPM226A |