

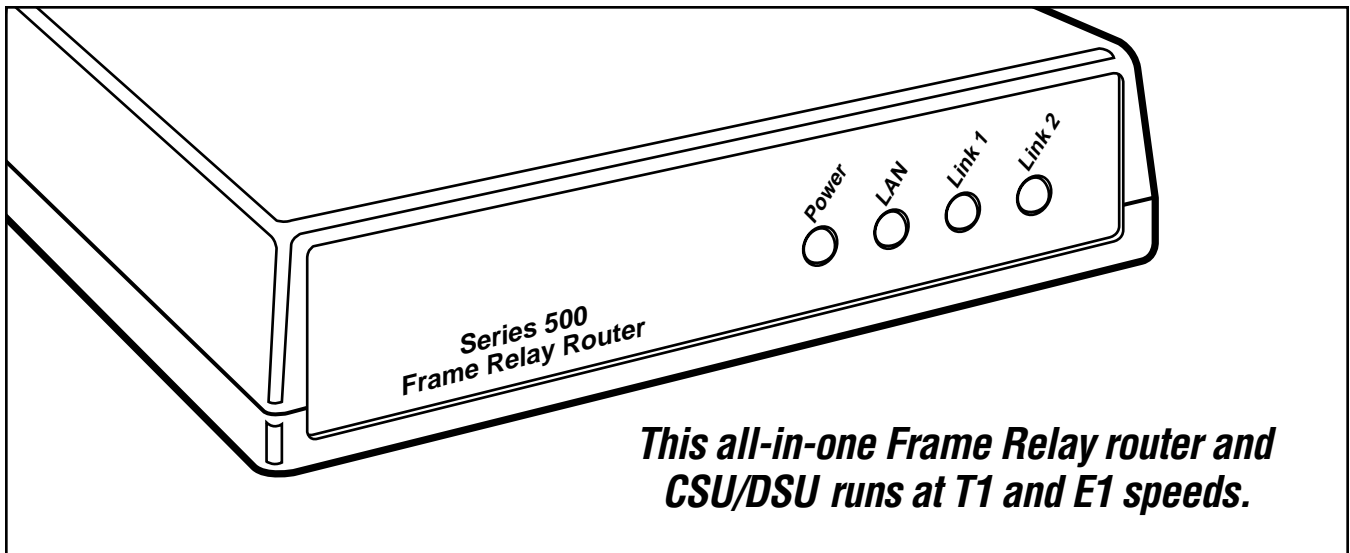


© 2000. All rights reserved.
Black Box Corporation.

BLACK BOX[®]

NETWORK SERVICES

SERIES 500 BRANCH OFFICE FRAME RELAY ROUTER W/T1 CSU/DSU



Key Features

- ▶ **Frame-Relay router and CSU/DSU in one.**
- ▶ **Supports T1 and E1 speeds.**
- ▶ **Features one leased-line connection, a V.35 WAN interface, and an Ethernet LAN port.**
- ▶ **NetSAFE Firewall guards against intruders.**
- ▶ **Routes IP/IPX™, and provides transparent bridging of all nonroutable protocols.**
- ▶ **Plugs directly into your demarc box.**

Introducing the perfect router for small-office networking. This compact, inexpensive high-end office router features a built-in T1/E1 CSU/DSU. It weighs less than a pound and fits in the palm of your hand. The Router gives you one T1 leased-line connection, as well as a V.35 WAN interface (via RJ-48 connectors) and an Ethernet LAN port (via an RJ-45 female connector).

Whether you need PPP-MP or Frame Relay over leased line, the Router will work. It's software configurable to support either clear channel or fractional channel allocation.

Installation is easy.

The Router comes with Auto Learning and Auto Configuration of DLCIs and link-management parameters. Once it's set up and connected to a Frame-Relay network, the Router will automatically detect DLCI numbers and configure its routing tables accordingly. It will detect the type of line management being used and adapt to it.

Transmits at the fastest data rate possible.

Since it uses Advanced Congestion Control, the Router will transmit at the maximum data rate (where possible), scaling back the transmission in phases if the network becomes congested. This eliminates the impact of lost data frames.

Increases throughput.

The Router increases throughput for up to 40 DLCIs. It also has other standard, cost-effective features such as IP/IPX routing, transparent bridging, NAT/NAPT and Reverse NAPT, DHCP support, and Telnet and SNMP v2 Management.

Guards against intruders.

The Router uses NetSAFE Firewall to guard against intruders and hackers, restricting access to and from any device, browser, or server. To-and-from access is limited to user-defined IP addresses. All company sites can have access to Intranet and FTP servers, while the general public has access only to the Web server.



8/11/2000

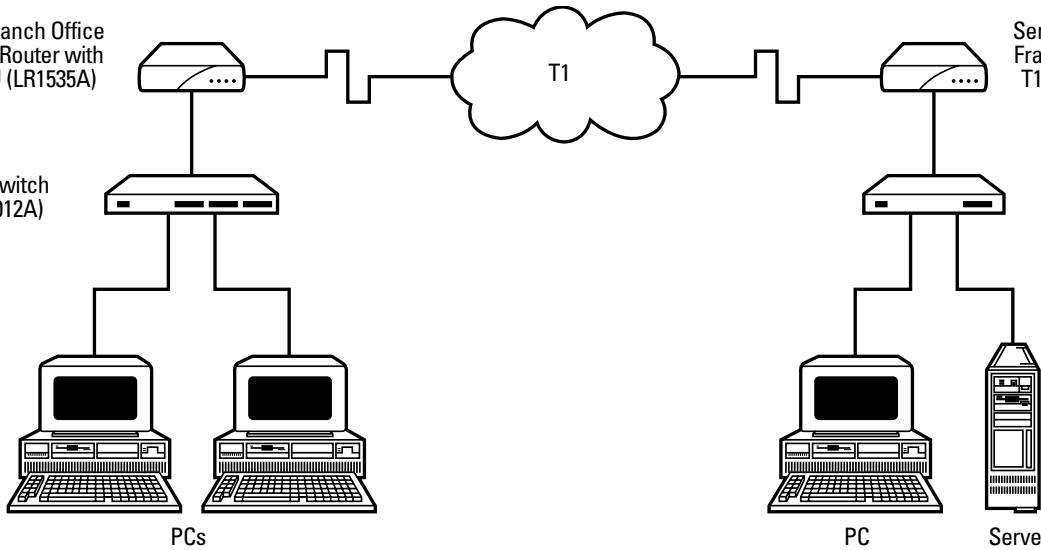
#24882

Series 500 Branch Office
Frame Relay Router with
T1 CSU/DSU (LR1535A)

Series 500 Branch Office
Frame Relay Router with
T1 CSU/DSU (LR1535A)

Site Switch
(LB2012A)

Site Switch
(LB2004A)



PCs

PC

Server

Specifications

Approvals: FCC Part 68/Part 15,
Class A, CE

Compression: Stac LZS, per DLCI

Management: LSNMPV2, WEB II,
Bridged MIB, Enterprise MIB,
Telnet, Console port

Security: NetSAFE Firewall, PAP,
CHAP, NAT, DHCP

Speeds: T1: 1.544 Mbps;
E1: 2.040 Mbps

Indicators: Power, LAN, Link 1,
Link 2

Interface: LAN: 10BASE-T MDI and
MDI-X ports; WAN: T1/E1

Connectors: LAN: RJ-45;
WAN: RJ-48

Power: 12 VDC, 1 A

Size: 1.6"H x 6.1"W x 4.3"D (4.1 x
15.5 x 10.9 cm)

Weight: 0.7 lb. (0.3 kg)

What the Package Includes

- Series 500 Frame Relay Router with T1 CSU/DSU
- Console cable
- Power supply
- Users' manual on CD-ROM

Why Buy From Black Box? Exceptional Value. Exceptional Tech Support. Period.

Recognize any of these situations?

- You wait more than 30 minutes to get through to a vendor's tech support.
- The so-called "tech" can't help you or gives you the wrong answer.
- You don't have a purchase order number and the tech refuses to help you.
- It's 6p. m. and you need help, but your vendor's tech support line is closed.

According to a survey by Data Communications magazine, 90% of network managers surveyed say that getting the technical support they need is extremely important when choosing a

vendor. But even though network managers pay anywhere from 10 to 20% of their overall purchase price for a basic service and support contract, the technical support and service they receive falls far short of their expectations—and certainly isn't worth what they paid.

At Black Box, we guarantee the best value and the best support. You can even consult our Technical Support Experts before you buy if you need help selecting just the right component for your application.

Don't waste time and money—call Black Box today.

Ordering Information

ITEM

CODE

Series 500 Branch Office Frame Relay Router
with T1 CSU/DSULR1535A

You might also need to order...

Category 5 Patch Cable, 100-MHz, 4-Pair, Straight-
Pinned, PVC, Beige, 10-ft. (3-m)EVMSL05-0010

