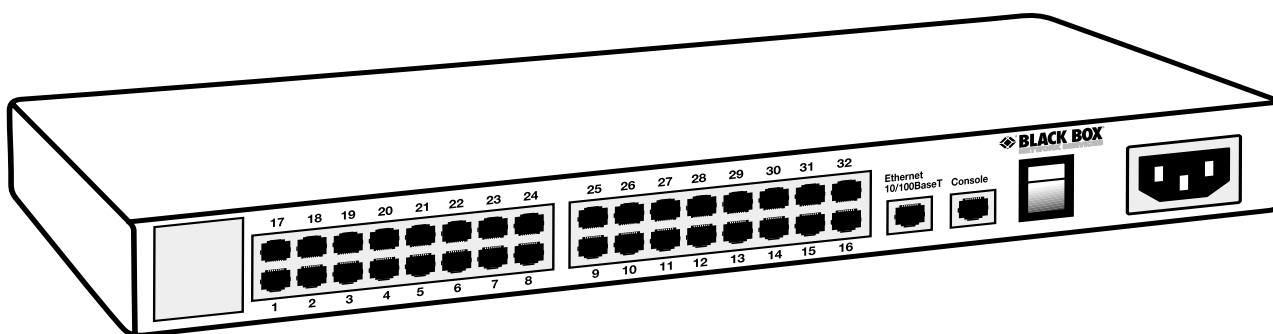


Secure Console Server SSH



Key Features

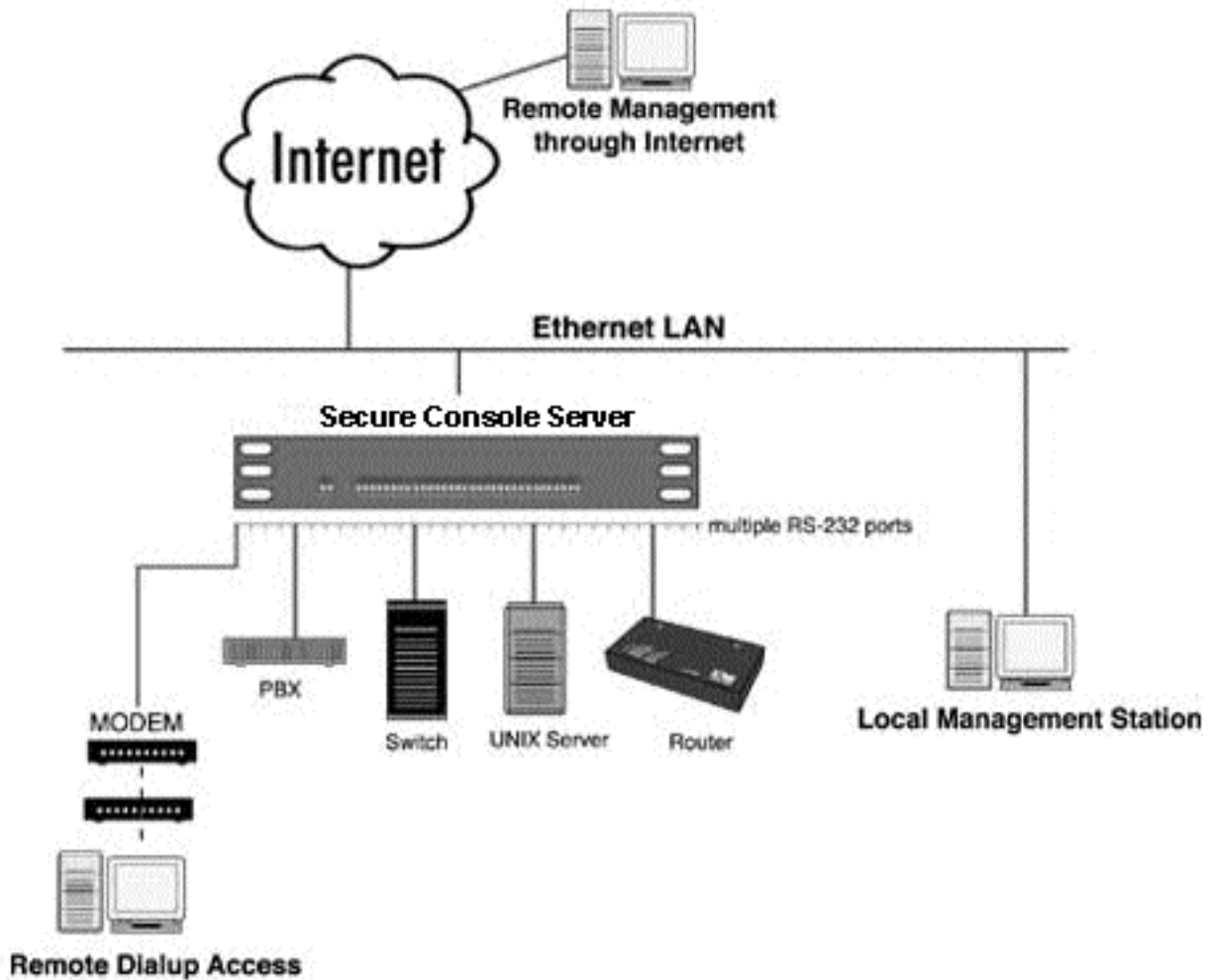
- ▶ **IP Packet Filtering, RADIUS and SSH v2 support**
- ▶ 1 / 4 / 8 / 16 / 32 / 48 ports on 1U of rack space
- ▶ Linux, FreeBSD, Sun, HP, and IBM compatible
- ▶ No unintentional breaks (Sun) (except LBS2800A-1)
- ▶ Off-line data buffering
- ▶ First Linux-based Terminal Server in the market

The Secure Console Servers connect multiple RS-232 serial ports to the Ethernet LAN. With a reliable and high-density design, they support 1, 4, 8, 16, 32 or 48 serial ports taking only 1U of rack space.

As Console Access Servers for server farms, they connect to the console ports of servers and networking equipment and allow the system administrator to remotely and securely monitor and manage servers. Features such as RADIUS socket authentication, direct telnet to serial port, secure shell connections (SSH), IP packet filtering, and RFC2217 support make it the ideal solution for ISPs, ASPs and corporate users managing a large number of console ports.

The Secure Console Server connect local or remote clients to the Ethernet LAN. It has all the features necessary for both the ISP and corporate remote access applications using serial lines and analog modems.

Different from other networking equipment designed with proprietary software technologies, the Secure Console Server leverage on Open Source software (Linux OS), offering high-level of flexibility and support for customizations and additional functionality incorporated by the end-user or system integrator.



Specifications

Hardware

CPU — MPC855T (PowerPC dual-CPU)

Memory — 16MB (LES2800A-1/LES2800A-4/LES2800A-8), 32MB (LES2800A-16), 64MB (LES2800A-32), 128MB (LES2800A-48), SDRAM

Flash Memory — 4MB

External Interfaces

LAN — 1 Ethernet 10/100BT on RJ-45

Serial (LES2800A-48) — 48 RS-232DTE on RJ-45, 921 Kbps

Serial (LES2800A-32) — 32 RS-232 DTE on RJ-45, 921 Kbps

Serial (LES2800A-16) — 16 RS-232 DTE on RJ-45, 921 Kbps

Serial (LES2800A-8) — 8 RS-232 DTE on RJ-45, 921 Kbps

Serial (LES2800A-1) — 1 RS-232 DTE on DB9, 230Kbps

Serial (LES2800A-4) — 4 RS-232 DTE on RJ-45, 921 Kbps

Console — 1 dedicate RS-232 console port

Software Protocols — Secure Console Server-NetlinOS (embedded Linux) Socket Authorization, SSH, Firewall text-based and WEB-based interface* CDK for user custom applications

*availability pending; contact BLACK BOX TECH SUPPORT for more information

Power and Environmental

Dimensions (WxDxH) —

LES2800A-16, -32, -48: 18 x 43 x 4.5 cm
LES2800A-4, -8: 21.3 x 11. x 2.5 cm

LES2800A-1, 7 x 8.5 x 3 cm (1U of height)

Power — internal 100-240VAC auto-range, 40W max.; external universal AC, 15W max. (48VDC option available)
LES2800A-1: Ext. AC adapter 5W, universal input 90-240 VAC

Operating Temperature Certification — FCC Class A, CE

Black Box Network Services - The world's largest network services company

We are, with 25 years of experience, the world leader in network infrastructure services.

On the Phone — no charge, answer calls in less than 20 seconds, find the

right product with our technical experts. **On-site** — superior design and engineering, Certified installations, end-to-end service.

On-line — receive technical knowledge

on-line, including technology overviews, BLACK BOX Explains and the Knowledge Box.

Most comprehensive TECHNICAL SUPPORT — our best product! Free hotline TECH SUPPORT!

The world's best customer service — Custom design services and products, the best warranties, money-saving discount programs.

Black Box exclusives — Certification Plus. Guaranteed-for-life products and services.

Ordering information

Item	Code
Secure Console Server	
1 Port Secure Console Server	LES2800A-1
4 Port Secure Console Server	LES2800A-4
8 Port Secure Console Server	LES2800A-8
16 Port Secure Console Server	LES2800A-16
16 Port Secure Console Server with VDC	LES2800A-16-DC
32 Port Secure Console Server	LES2800A-32
32 Port Secure Console Server with VDC	LES2800A-32-DC
48 Port Secure Console Server	LES2800A-48
1.8 m Cable, RJ45/DB25F Console Port	LEU2800-DB2F
1.8m Cable, RJ45/DB9F Console Port Cable	LEU2800-DB9F
1.8 m Cable, 1:1 RJ45/DB25M for DCE-Module	LEU2800-DB25M
1m Console Cable to SUN NETRA Server, RJ45	LEU2800-NET1M
2m Console Cable to SUN NETRA Server, RJ45	LEU2800-NET2M
3m Console Cable to SUN NETRA Server, RJ45	LEU2800-NET3M
5m Console Cable to SUN NETRA Server, RJ45	LEU2800-NET5M
10m Console Cable to SUN NETRA Server, RJ45	LEU2800-NET10M
15m Console Cable to SUN NETRA Server, RJ45	LEU2800-NET15M
RJ45-DB9M Console Adapter to DTE	LEU2800A9M
RJ45-DB9F Console Adapter to DTE	LEU2800A9F
RJ45-DB25M Console Adapter to DTE	LEU2800A25M
RJ45-DB25F Console Adapter to DTE	LEU2800A25F