



BLACK BOX[®]

NETWORK SERVICES

Managed Layer 2 Stackable Ethernet Switch



Key Features

- ▶ Allows stacking of up to 16 units.
- ▶ Management through webbrowser or SNMP.
- ▶ Supports Port-based, tag-based and protocol-based VLAN.
- ▶ Supports IEEE802.1x Authentication and Authorization.
- ▶ Supports IEEE802.1d Spanning Tree.
- ▶ Allows Port-Trunking with flexible load distribution and fail-over functions.
- ▶ Supports management by a Single IP address.
- ▶ Offers a wide variety of add-on modules: Copper Gigabit, Fibre Gigabit, GBIC adapters, mini-GBIC transceivers and router modules.

Managed 24-port 10/100 Mbps switch with a wide variety of uplinks.

Black Box's LBS1226AE-R2 is a high performance managed Layer 2 switch, which is an ideal solution for work-groups and departments. It has 24 10/100-Mbps Fast Ethernet ports with a wide variety of Gigabit and Router modules.

High-performance, high-availability Layer 2 switching.

Using a high performance switch fabric and support for 14,000 MAC addresses, the LBS1226AE-R2 is a wire-speed, high performance departmental switch. It supports port trunking with up to 7 trunk groups. Each trunk group can support up to (4) 10/100 links or (2) Gigabit links. They can be combined together to create a multilink load-sharing connection. Up to 16 switches can be stacked together. In that way, you can create stacks of up to (384) 10/100 ports that can all be managed using a single IP address.

Investment protection.

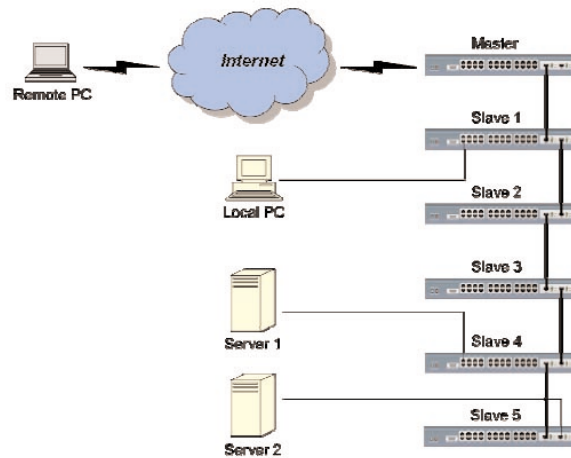
By widely supporting IEEE approved specifications, the LBS1226AE-R2 leverages your existing investment in a multi-vendor environment, while maximising com-

patibility of mission critical features like Spanning Tree (802.1d), QoS (802.1p), VLANs (802.1v/802.1q) and network management (SNMP/RMON/BOOTP/Telnet/Web). The switch's robust support of standards based network management protocols (SNMP/RMON/Telnet/Web) and port mirroring enables you to integrate into many third-party network management packages.

What's included:

- (1) Switch
- (1) Power Cord, 1.8-m
- (1) 19 inch Rackmount Kit
- (1) Console Port cable, DB-9 male-female, 1.8-m
- (1) Printed Quick Installation Guide
- (1) Manual on CD-ROM

Typical Application with (6) stacked switches



Specifications

Standards

IEEE 802.3 10Base-T Ethernet,
 IEEE 802.3u 100Base-TX Fast Ethernet,
 IEEE 802.3ab 1000Base-T Gigabit Ethernet,
 IEEE 802.3z 1000BaseSX/LX Gigabit Ethernet,
 IEEE 802.3x flow control,
 IEEE 802.1d Spanning Tree,
 IEEE 802.1p Priority Control,
 IEEE 802.1q tag-based VLAN,
 IEEE 802.1v protocol-based VLAN,
 IEEE 802.1x Authentication and Authorisation

Connectors

LBS1226AE-R2
 Data ports (24) 10/100Mbps RJ-45 STP
 Management port: (1) RS-232 DB9F
 LBS1200C-2T - (2) RJ-45 STP
 LBS1200C-2SX - (2) duplex SC
 LBS1200C-2LX - (2) duplex SC
 LBS1200C-2SXMG - (2) duplex LC
 LBS1200C-2LXMG - (2) duplex LC
 LBS1200C-1T1SXG - (1) RJ-45 STP + (1) GBIC slot
 LBS1200C-1T1LXG - (1)RJ-45 STP + (1) GBIC slot
 LBS1200C-1T1SX - (1) RJ-45 STP + (1) duplex SC
 LBS1200C-1T1LX - (1)RJ-45 STP + (1) duplex SC
 LBS1200C-1SXMG - (1) duplex LC
 LBS1200C-1LXMG - (1)duplex LC

Data RAM Buffers

- 1MB for control, 3MB for packet buffers
 - 6KB entries for MAC addresses
 - 4KB entries for VLANs

Diagnostic LEDs

- 1 power LED: Green (normal),
 - 1 self-diagnostic LED: Blinking during power-on-diagnostics,
 - Port LEDs: 1~ 24 ports, left corner of each RJ-45 port, Green (Link ok), Blinking (Activity)
 - Speed LEDs: 1 ~ 24 ports, right corner of each RJ-45 port, Green (100M), Vanish (10M)
 - FAN LEDs: FAN1 Red (left side fan fail), FAN2 Red (right side fan fail)
 - Gigabit modules LEDs: Orange(10M Link ok), Green (100M link ok), both Orange & Green (1000M link ok), Blinking (Activity)

Power

Input: 100 ~ 240VAC 50/60Hz
 Power consumption: maximum 30 Watts

Temperature

Operating: 5C ~ 45C
 Storage: -20C ~ 70C

Humidity

Operating: 10% ~ 90% RH
 Storage: 5% ~ 90% RH

Dimensions

44H x 440W x 184D mm

Weight

2,3 Kg

Compliant with

FCC, CE, VCCI, C-Tick

Ordering information

ITEM

CODE

Managed Stackable Layer 2 Switch

24-port switch with (1) empty slot (on front panel)LBS1226AE-R2

Gigabit Modules with...

(2) 10/100/1000Base-T portsLBS1200C-2T
 (2) 1000Base-SX portsLBS1200C-2SX
 (2) 1000Base-LX portsLBS1200C-2LX
 (2) 1000Base-SX mini-GBICs transceiversLBS1200C-2SXMG
 (2) 1000Base-LX mini-GBICs transceiversLBS1200C-2LXMG
 (1) 10/100/1000Base-T port +
 (1) 1000Base-SX GBIC slotLBS1200C-1T1SXG
 (1) 10/100/1000Base-T port +
 (1) 1000Base-LX GBIC slotLBS1200C-1T1LXG
 (1) 10/100/1000Base-T + (1) 1000Base-SX portsLBS1200C-1T1SX
 (1) 10/100/1000Base-T + (1) 1000Base-LX portsLBS1200C-1T1LX
 (1) 1000Base-SX mini-GBICs transceiverLBS1200C-1SXMG
 (1) 1000Base-LX mini-GBICs transceiverLBS1200C-1LXMG

Black Box Network Services - The world's largest network services company

We are, with 25 years of experience, the world leader in network infrastructure services.

On the Phone — no charge, answer calls in less than 20 seconds, find the right product with our technical experts.

On-site — superior design and engineering, Certified installations, end-to-end service.

On-line — receive technical knowledge on-line, including technology overviews, Black Box Explains and the Knowledge Box.

Most comprehensive TECHNICAL SUPPORT — our best Product! Free hotline TECH SUPPORT!

The world's best customer service — Custom design services and products, the best warranties, money-saving discount programs.

BLACK BOX exclusives — Certification Plus. Guaranteed-for-life products and services.

