



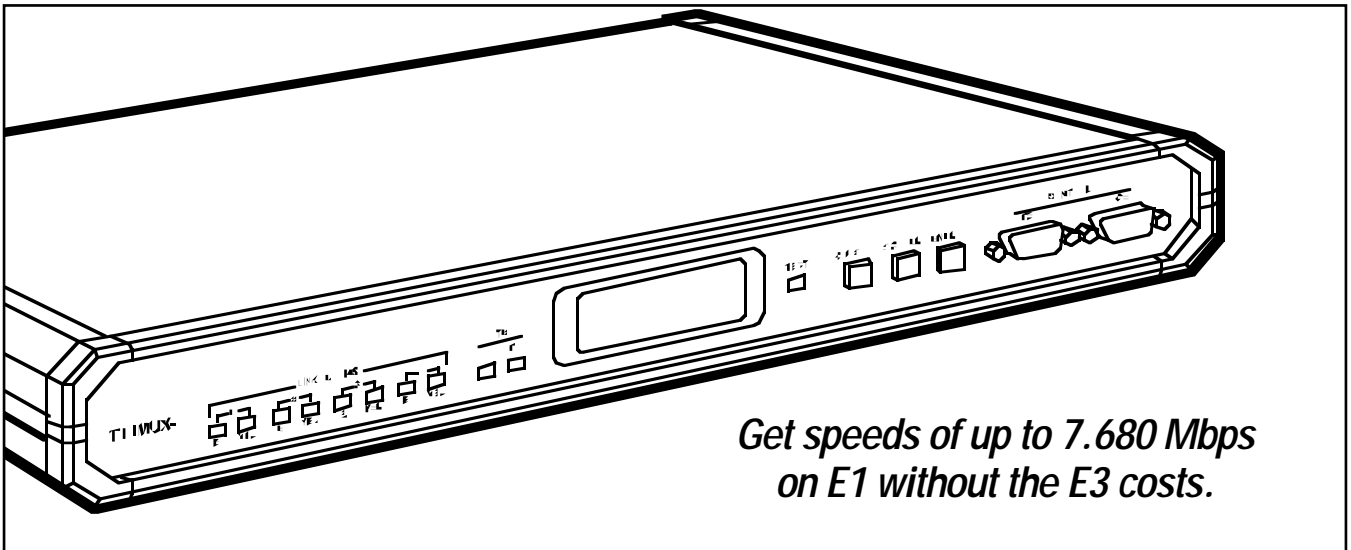
BLACK BOX[®]

NETWORK SERVICES

© 2003. All rights reserved.
Black Box Corporation.

Black Box Network Services • 464 Basingstoke Road • Reading, Berkshire, RG2 0BG • Tech Support: 0118 965 6000 • www.blackbox.co.uk • e-mail: techhelp@blackbox.co.uk

E1 IMUX



*Get speeds of up to 7.680 Mbps
on E1 without the E3 costs.*

Key Features

- ▶ **Combines two or four E1 lines into a single DTE connection to create a higher-rate logical channel.**
- ▶ **Speeds ranging from 1.920 to 7.68 Mbps — on E1!**
- ▶ **Compensates for differential delay.**
- ▶ **Built-in BERT and loopbacks.**
- ▶ **V.35 interface.**

You don't always need E3 to get the speeds your application demands. The E1 IMUX aggregates the bandwidth of up to four E1 lines, thus creating a higher-rate logical channel. Resulting speeds range from 1.920 to 7.68 Mbps.

The E1 IMUX provides the extra bandwidth you need for the times when you need more bandwidth than regular E1

provides. It also serves as a perfect ATM-DXI extension to fractional E3 ATM networks.

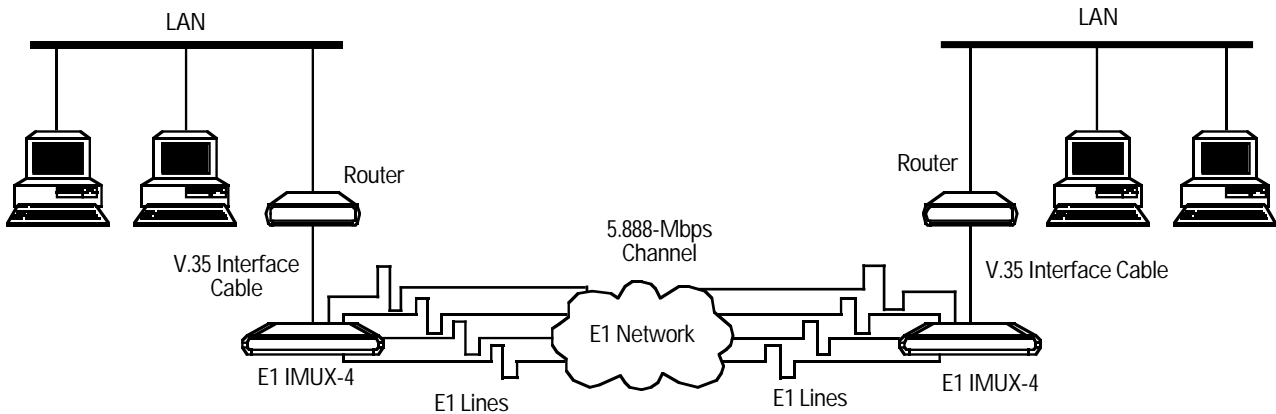
The multiplexor also improves your high-speed connection's fault tolerance by providing load sharing over redundant links. The link providing communication will always remain up and running even if a E1 link should go down, and the logical channel remains open and running at a reduced

speed through automatic rate fallback. The E1 IMUX returns to its original rate when failed links are recovered.

E1 IMUX is capable of piecing together the original data stream even when a differential delay of up to 16 ms occurs between E1 lines.

System timing options include internal clock, loopback, and station clock.

Combine two or four E1 lines into a single DTE connection.



Why Buy From Black Box? Exceptional Value. Exceptional Tech Support. Period.

Recognise any of these situations?

- You wait more than 30 minutes to get through to a vendor's tech support.
- The so-called "tech" can't help you or gives you the wrong answer.
- You don't have a purchase order number and the tech refuses to help you.

According to a survey by Data Communications magazine, 90% of network managers surveyed say that getting the technical support they need is extremely important when choosing a vendor. But even though network managers pay anywhere from 10 to 20% of their overall purchase

price for a basic service and support contract, the technical support and service they receive falls far short of their expectations—and certainly isn't worth what they paid.

At Black Box, we guarantee the best value and the best support. You can even consult our Technical Support Experts before you buy if you need help selecting just the right component for your application.

Don't waste time and money—call Black Box today.

Specifications

Data Channels: 2 or 4

Speed: E1: 2.048 Mbps;
Data: Any multiple of 1.92 Mbps, up to 7.68 Mbps

Interface: E1: ITU Rec. G.703, G.704, AT&T® TR-62411, PUB 54016;
Data: V.35

Connectors: MT280A: (1) M/34 F for V.35, (2) RJ-48, (1) RJ-45 F for station clock, (2) DB9 M/F;

MT285A: (1) M/34 F for V.35, (4) RJ-48, (1) RJ-45 F for station clock, (2) DB9 M/F

Indicators: Local and remote sync loss; Data port: TD, RD, TEST

Power: 115/230 VAC, 60/50 Hz,

Size: 1.7"H x 17"W x 9.5"D (4.3 x 43.2 x 24.1 cm)

Weight: 5 lb. (2.3 kg)

Ordering Information

ITEM	CODE
E1 IMUX-2.....	MT280A-E1-RJ45
E1 IMUX-4.....	MT285A-E1-EJ45
<i>You may also need:</i>	
V.35 Interface Cable, 10-ft. (3-m), Male/Male	EYN450-0010-MM