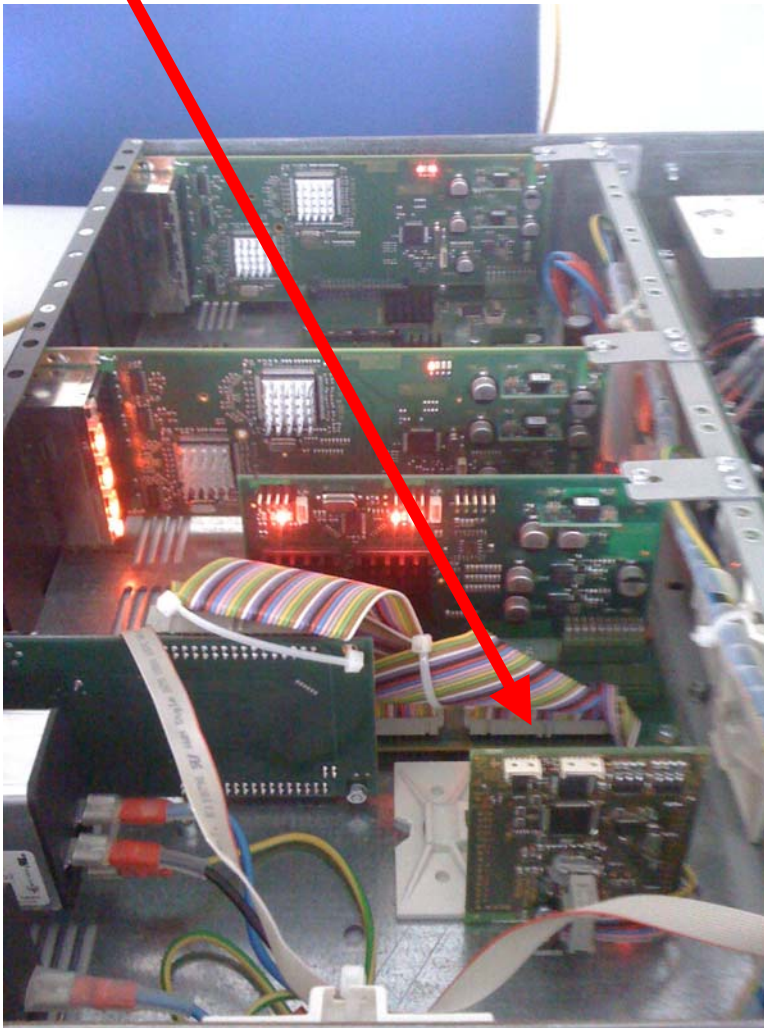


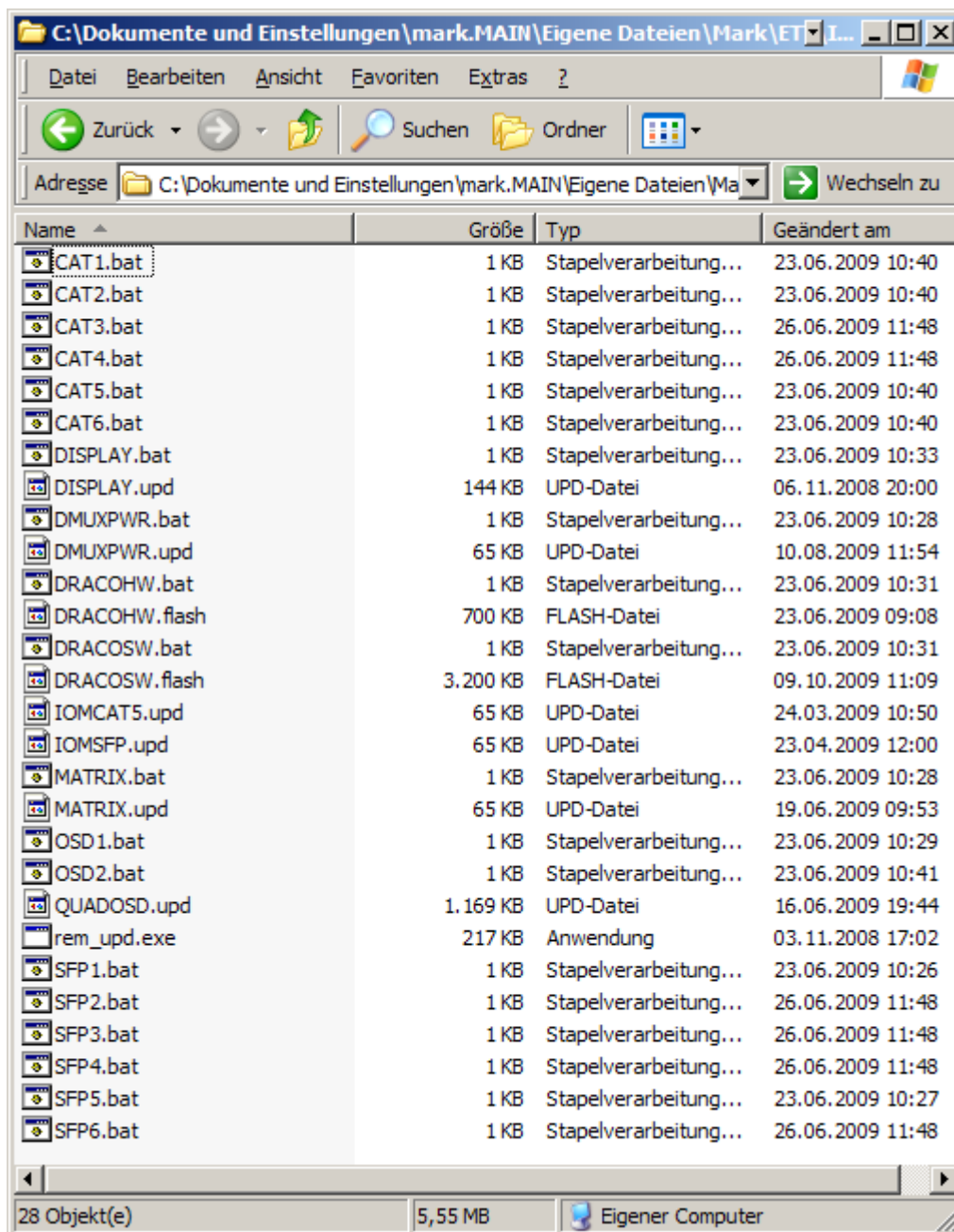
## Updating ServSwitch DKM

- First check your ServSwitch DKM version. There are two hardware versions. Those being delivered until approx. September '09 require Rev\_0 update files and those after require Rev\_1 update files. To identify the correct version you can either check the serial interface of the unit. If there is a USB and an RJ-10 interface, then it is most likely a Rev\_0. Newer units have only a DB-9 RS-232 interface. Alternatively you may check it by opening the cover and identify Rev\_0 seeing this little board:



- Now connect a PC or Laptop with the serial interface of the DKM. A Null-Modem cable is required or the special DB-9 to RJ-10 cable (Rev\_0).
- Open the DOS box and select the directory where the update files are located.

- You will see the following files:



- Start executing the updates batch files for the different modules.

- 1.) DRACOHW.bat
- 2.) DRACOSW.bat
- 3.) DMUXPWR.bat
- 4.) MATRIX.bat
- 5.) DISPLAY.bat

and follow the instructions on the screen.

Depending on how many input/output modules are installed and what type they are ( CATx or SFP ) each module needs to be updated individually:

The module responsible for CPUs 1-8 requires:

CATx: CAT1.bat  
or  
SFP: SFP1.bat

The module responsible for CPUs 9-16 requires:

CATx: CAT2.bat  
or  
SFP: SFP2.bat

The module responsible for CPUs 17-24 requires:

CATx: CAT3.bat  
or  
SFP: SFP3.bat

The module responsible for CPUs 25-32 requires:

CATx: CAT4.bat  
or  
SFP: SFP4.bat

The module responsible for Consoles 1-8 requires:

CATx: CAT5.bat  
or  
SFP: SFP5.bat

The module responsible for CPUs 9-16 requires:

CATx: CAT6.bat  
or  
SFP: SFP6.bat

Not installed modules do not need to be updated!

### **Updating the OSD modules:**

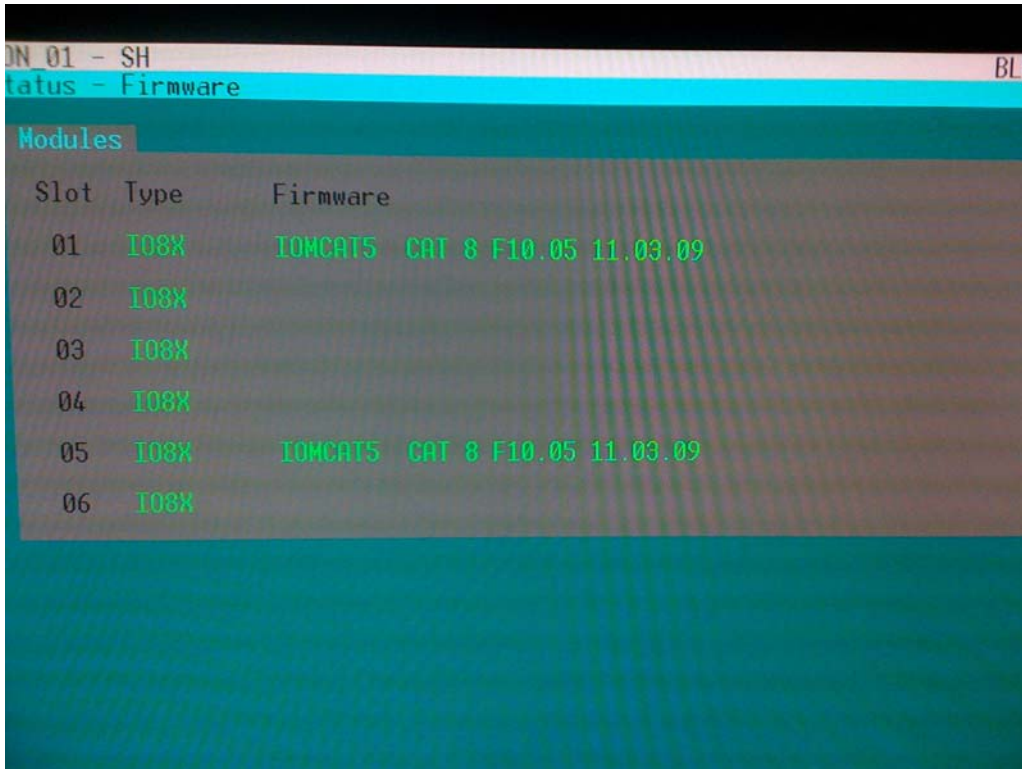
The OnScreenDisplay of the DKM is provided by OSD modules. Each module is responsible for eight consoles. In order to support 16 consoles with OSD, two OSD modules are required whereby each module serves eight dedicated Ports. OSD module 1 (OSD1) Console Ports 1-8 and OSD module 2 (OSD 2) Console Ports 9-16. An eight user Switch (ACX08xx) will only have OSD1 installed, an ACX16xx will most likely have OSD1 and OSD2 installed.

Execute the OSD1.bat and if necessary execute the OSD2.bat .

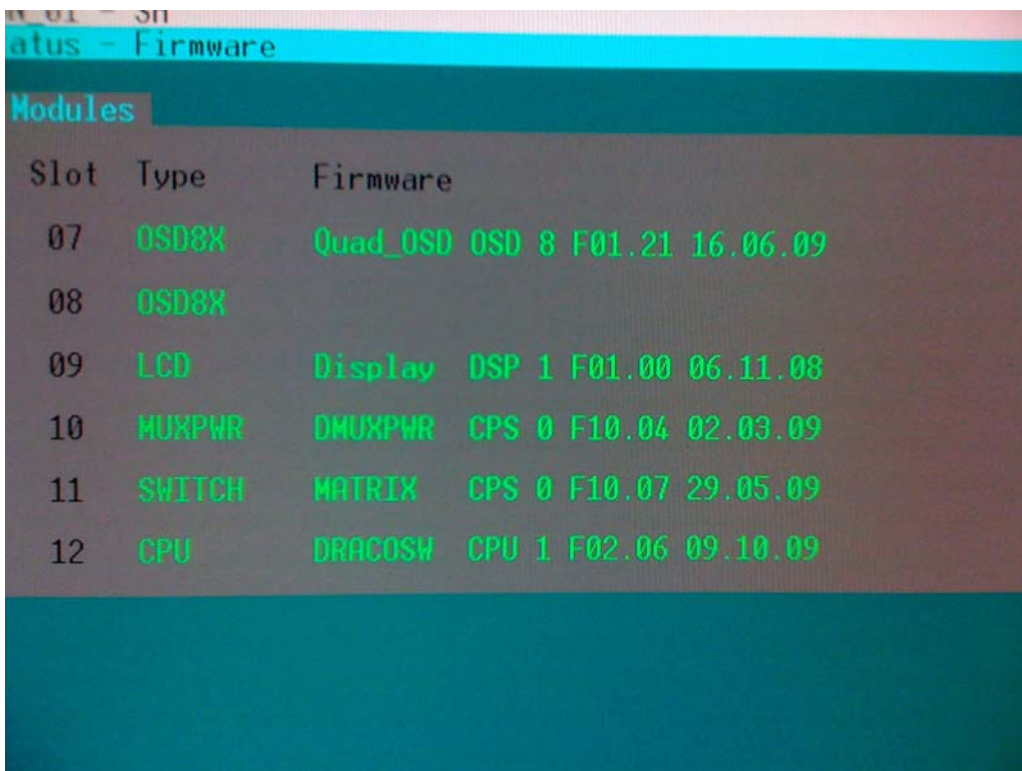
Once all required updates are done, please reboot the DKM and you are ready to go.

If you know that only specific modules require an update, only these need to be updated!

You may check the Firmware Release Status using the OnScreenMenu.



Pict. 1: Shows the Firmware Version of the In/Out modules. In this case here an ACX0808 with a CATx module in slot 1 (CAT1) and another one in slot 5 (CAT5)



Pict. 2: Shows the rest of the modules. Slot 7 and 8 indicate the presence and release of the OSD1/2 modules.