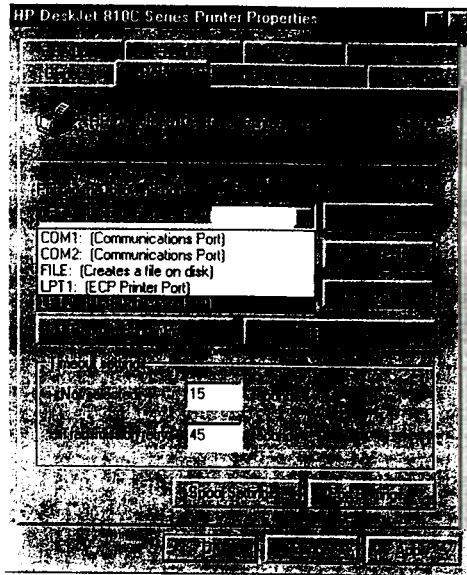
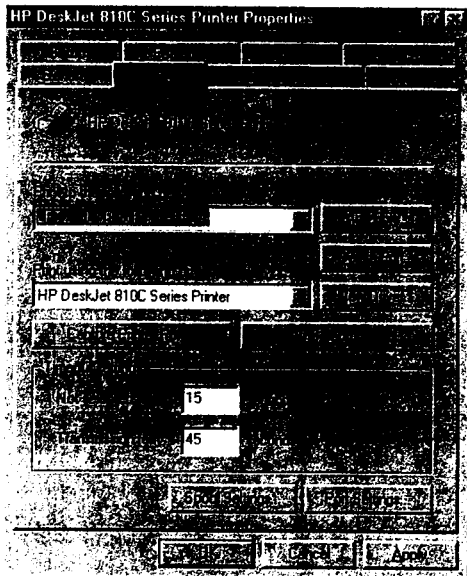


1101284



(7)



(8)

UNinstallation

- Step 1. Unplug the USB-A connector of USB to IEEE-1284 printer cable
- Step 2. Run the UNINST.EXE program which provides from driver diskete.
- Step 3. Reboot the PC when prompted to do so. Then you can re-install USB to IEEE-1284 printer cable again.

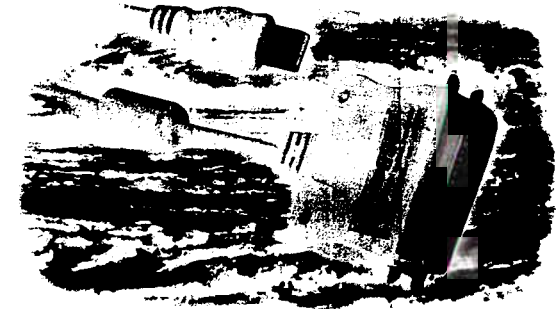
Specification

Function	Description
Power	Bus powered from USB port
Supply Voltage	+5V
Supply Current	75mA max
Input connector	USB A type connector
Output connector	Centronics 36pin male connector
Cable length	6 ft AWG 28/24
Operating temperature	5 ~ 40°C
Stock temperature	-20 ~ 60°C
Humidity	0 ~ 80% RH. Noncondensing
Case material	Plastic
Weight	100 g
Dimension (LxWxH)	62 x 50 x 20 mm

Remarks

1. If you want plug or unplug USB to IEEE-1284 printer cable while host is on. Please plug or unplug USB side first, and then printer.
2. Do not unplug USB to IEEE-1284 printer cable while printer is printing.

USB to IEEE-1284 Printer Cable User's Manual



Packing includes

1. USB to IEEE-1284 printer cable
2. Diskette with device driver
3. User's manual

Introduction

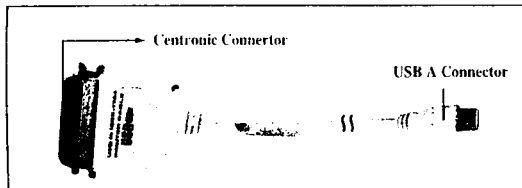
The USB to IEEE-1284 printer cable provides a high speed bi-birectional bridge between Universal Serial Bus (USB) and IEEE-1284 parallel port peripheral device. It is easy to install and compatible with parallel printer.

System requirements

1. Personal computer with 486 processor or higher
2. USB port inside the PC
3. Windows 2000 or Windows 98 or some versions of Windows 95 release 2.
4. Parallel printer or other peripheral device conforming to IEEE 1284

Features

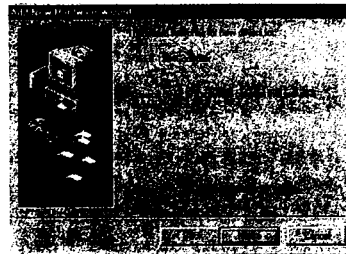
- Full compliance with USB specification 1.0
- Full compliance with USB Device Class Definition for Printing Devices Version 1.0
- Full compliance with the IEEE std1284-1994
- Fully plug & play compatible
- Bus powered and does not need any external power
- Compatible with PC & iMAC (Mac OS 8.6 and newer version)



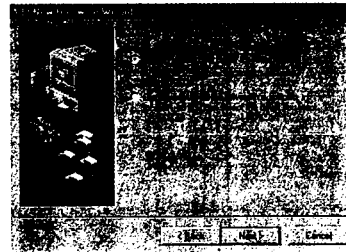
Installation

- Step 1. Plug the centronic connector of the USB to IEEE-1284 printer cable into the printer parallel port.
- Step 2. Plug the USB-A connector of the USB to IEEE-1284 printer cable into the downstream port located in the back of PC or one downstream port of another USB HUB.
- Step 3. Windows will inform you it has detected new hardware. Use the Wizard to Complete the installation of the USB to IEEE-1284 printer cable. Meanwhile insert the the driver diskette into the floppy driver. The Wizard will find the driver for the USB to IEEE-1284 printer cable.

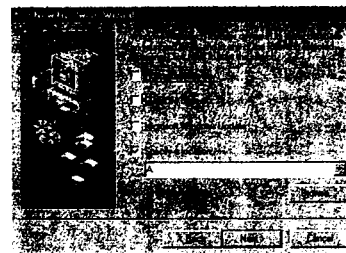
(1)



(1)



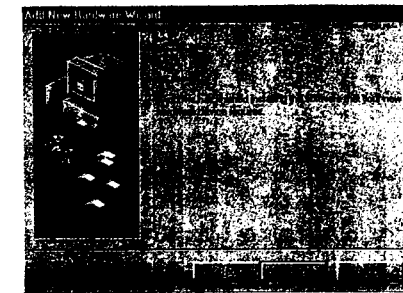
(2)



(3)

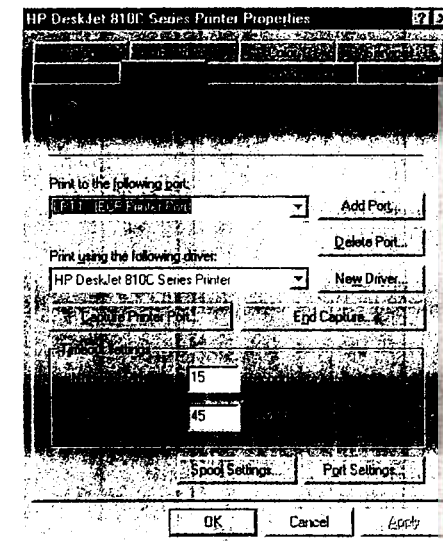


(4)



(5)

- Step 4. After finish the installation of the Wizard, [click] My computer, [click] printer. Right [click] your newly installed printer, [click] printer properties and [click] Details. Select [USB to parallel port] of (print to the following port), then [click] OK.



(6)

(2)

(3)