



iCOMPEL™

BLACK BOX DIGITAL SIGNAGE



QUICK USER GUIDE



BLACK BOX®

blackbox.com | +1 (724) 746-5500

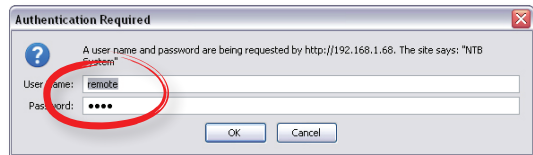
contents

Getting Connected	1
How to Log into an iCompel	1.1
Connection Troubleshooter	1.2
How it works	1.3
How to Restore Default Settings	1.4
How to Upload Files to the iCompel	1.5
Layouts	2
What is a Layout?	2.1
How to Add a Layout	2.2
How to Edit Layout and Zone Properties	2.3
How to Copy, Rename or Delete a Layout	2.4
Playlists	3
What is a Playlist?	3.1
How to Add Folders or Files to a Playlist	3.2
How to Add Special Items to a Playlist	3.3
How to Edit Playlist Item Properties	3.4
Schedules	4
How the Schedule Works	4.1
How to Schedule Layouts	4.2
Ad hoc	5
What is Ad hoc?	5.1
How to Create an Ad hoc Item	5.2
How to Playlist an Ad hoc Item	5.3
How to Create an Ad hoc User Account	5.4
How to Create an Ad hoc Page and Add Items to it	5.5
How to Make Ad hoc Changes	5.6

1.1 How to Log into an iCompel

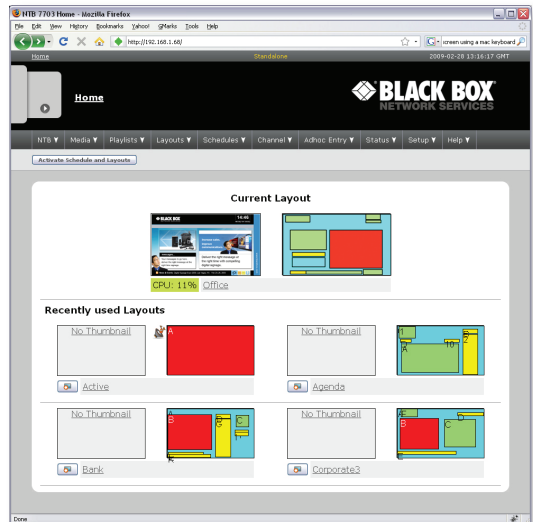
- 1 Ensure that the iCompel is connected to the network. Ask your Network Administrator for advice if unsure.
- 2 Open a web-browser (e.g. Internet Explorer) in a computer that is also connected to the network.
- 3 In the 'Address' bar of the web-browser, type the IP address of the iCompel and press the 'Enter' key. If you do not know it, restart the iCompel and wait for it to appear on the screen.

- 4 You will be prompted for a user name and password. The factory defaults are 'remote' and '9999'.



- 5 If the user name and password are correct then the page shown here (right) should appear in your browser. You are now connected to the iCompel.

- 6 'Bookmark' the current page for easy retrieval in future.



1.2 Connection Troubleshooter

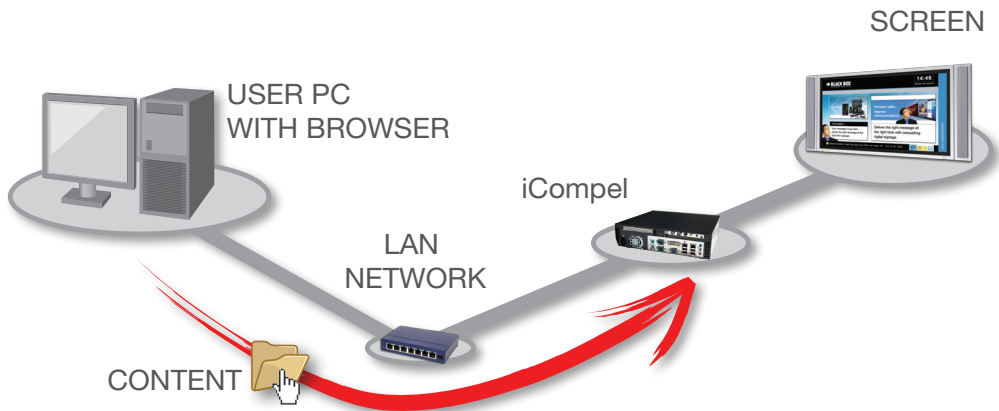
Check	Resolution
There must be network cables connecting the iCompel to your PC.	Either a network cable connecting your PC to your LAN and one connecting the iCompel to the LAN, or a crossover cable connecting your PC directly to the iCompel. (Are you absolutely sure that it is a crossover cable?).
If using a laptop then it must be connected to mains power.	If a laptop is running on battery power, the networking circuits may have been shut down. A reboot of the laptop and iCompel may be required.
If using a crossover cable, you should turn off any wireless networking.	Laptop computers often have a button to turn wireless off. Otherwise it will be an icon on the desktop.
If using a crossover cable then the PC must not be configured to work through a proxy.	In Internet Explorer, click on 'Tools Internet Options Connections LAN Settings' and make sure that there is no tick in the 'Use a proxy server...' checkbox. In Firefox, click on 'Tools Options.. Connection Settings' and make sure that 'Direct connection to the Internet' is selected.
Reboot the iCompel and the PC.	
A green 'OK' for 'eth0' should appear on the screen during iCompel boot-up.	A red 'eth0 [Fail]' usually means that the iCompel found nothing to connect with at the other end of the cable.
The IP address should appear on the screen during the iCompel boot sequence.	A 'No Cable' message means that the cable is missing or faulty or that there is another device on the network with the same IP address. '169.254.1.1' means DHCP could not be found or you are using a crossover cable.
The iCompel must have completed it's boot sequence.	The screen connected to the iCompel should be showing the default Layout and content.
The yellow LEDs on all applicable network sockets should be on or flashing.	Check the yellow light (if present) on the socket that the network cable plugs into on your PC, on the iCompel and any hubs or routers in the path from the PC to the iCompel (if applicable).

Check	Resolution
You should know the IP address of your PC.	To find the IP address of the PC: open a DOS command prompt, click on Start Run , type 'cmd' and click 'OK' , type 'ipconfig' and press Enter . You will see the IP address of the PC displayed.
The IP addresses of the iCompel and PC must be in the same 'sub-net'.	Ask your System Administrator for further advice. If the IP addresses of the iCompel is unreachable then see the section titled 'How to Restore Default Settings' .
You should try to 'ping' The iCompel from the PC. Note, however, that some networks do not allow pings.	In the DOS command prompt type: 'ping' followed by a space and then the IP address of the iCompel and press enter. After a few seconds you should see a message that includes the phrase '(0% loss)' . The yellow LED on the network socket of the iCompel should flash during the ping.
You should be able to web-browse to the iCompel.	In the web-browser, e.g. Internet Explorer, type the IP address of the iCompel into the address bar and press Enter. You will be prompted to enter the user name and password for the iCompel. If a valid user name and password were given then the home page of the iCompel will appear in the browser. If the user name or password have been forgotten then see the section 'How to Restore Default Settings' .
The browser should not be showing a cached version of the iCompel's web page.	If using Internet Explorer then remove any tick from the menu 'File Work offline' and clear the history under 'Tools Internet Options' . Try pressing 'F5' .
If using a crossover cable then you should not be prompted to dial up to the Internet.	If using Internet Explorer and you cannot prevent the PC from dialing out for an Internet connection then install the Firefox browser on your PC and use it to access the iCompel. Use Internet Explorer to access the Internet as before.
You should be able to FTP to the iCompel.	In Internet Explorer, type 'ftp://' followed the IP address of the iCompel into the address bar and press Enter. You will be prompted for the same user name and password. In Firefox, type 'ftp://' followed by the user name, a colon (:), the password, the at symbol (@) and then the IP address of the iCompel. e.g. ftp://remote:9999@192.168.1.2 . You should see a list of folders including 'media' .

1.3 How it works

The iCompel controls a screen (e.g. Plasma, LCD panel or projector) and you control the iCompel through a web-browser.

File-based content (e.g video) is uploaded from your PC onto the hard-drive in the iCompel. Under most applications there is NO STREAMING involved. Once files have been stored on the iCompel, they can be put into a Playlist via the web-browser.



Content that has been put into a Playlist on the iCompel will be shown on the screen, not the web-browser on your PC monitor.

1.4 How to Restore Default Settings

It is possible to configure the iCompel into a state where it simply cannot be contacted:

- An incorrect static IP address has been set.
- Passwords have been forgotten.
- The iCompel's firewall has been set incorrectly.

To restore the iCompel to factory default settings:

- 1 **Attach a keyboard to the purple jack** and press **Ctrl-Alt-F1**.
- 2 **Type the iCompel user name: 'maint', and press 'Enter'.**
- 3 **Type the iCompel password: 'maint', and press 'Enter'.**
- 4 **Type the number of the relevant menu option to reset factory settings.**
- 5 **Type 'yes' to agree to this change.**
- 6 **Type '0' to exit from the maintenance menu.**
- 7 **Type 'yes' to allow the system to reboot.**

Once the system has rebooted it should be accessible again. (This procedure will not delete any content).

1.5 How to Upload Files to the iCompel

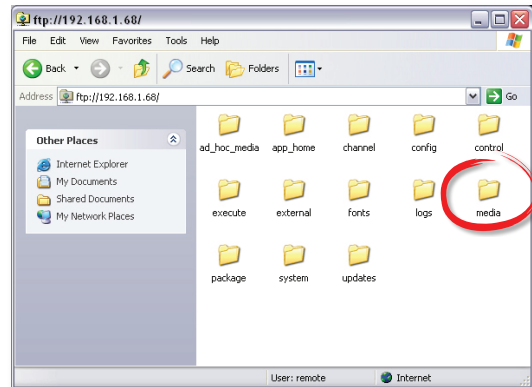
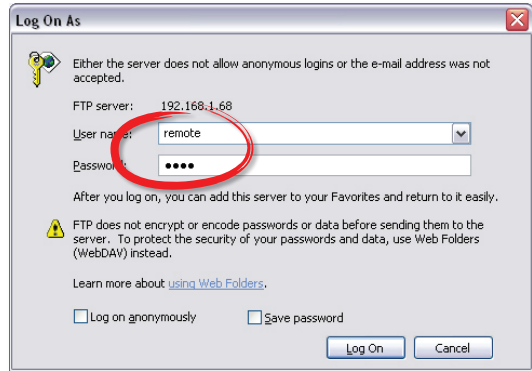
1 Open Windows Explorer and, in the Address Bar, type **'ftp://'** followed by the **IP address of the iCompel**.

2 You will be prompted to **enter the user name and password** to access the iCompel using FTP.

3 You will see a page that allows you to create, rename and delete folders on the iCompel.

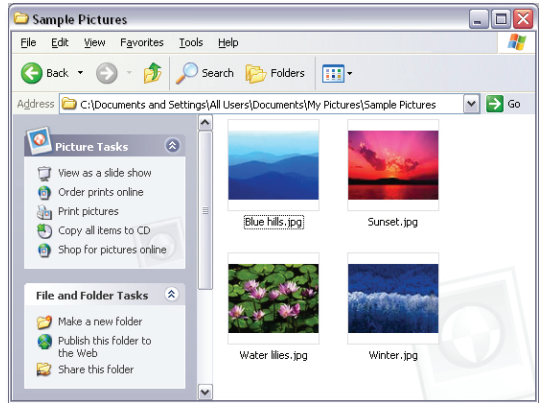
Work only in the **'media'** folder.

Create a suitable file structure by adding new folders under the media folder. **It is recommended that each Layout has it's own folder and each Zone/Playlist has it's own sub-folder.**

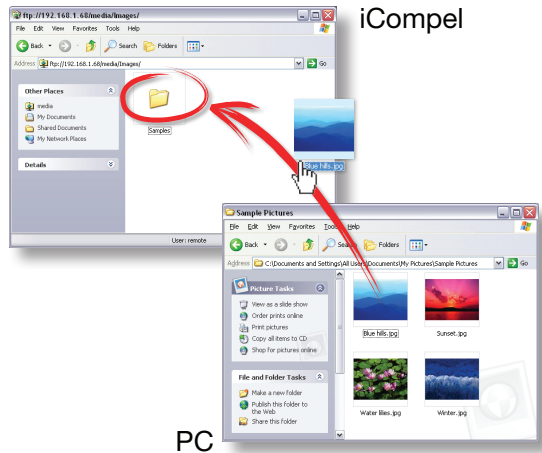


Some networks do not allow FTP, use the 'Files & Folders' web page on the iCompel to upload files.

4 Open another Windows Explorer on your PC and browse to a folder containing content that you wish to upload.



5 Drag and drop or copy and paste folders and/or files from your PC to the media sub-folders on the iCompel.



6 Rename and delete files on the iCompel if you wish.

7 To download files from the iCompel, just drag and drop in the reverse direction.

! The FTP page does not refresh itself automatically. Sometimes a file might appear twice or a file that you just uploaded may not show in the list. Use the F5 key or the Refresh button on your browser to redraw the page.

! You cannot move files from one folder to another in FTP. Use the cut and paste facility in the 'Files & Folders' web page on the iCompel.

2.1 What is a Layout?

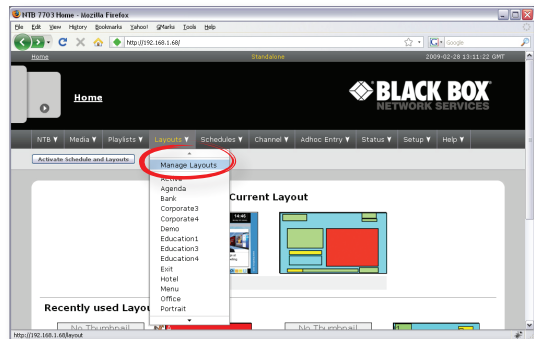
A Layout is the arrangement of rectangular Zones to be shown on the screen. Each Zone has a Playlist and each Playlist contains the media that will play in that Zone.



2.2 How to Add a Layout

1 Log into the iCompel.

Selects **'Manage Layouts'** under the **'Layouts'** drop-down menu.



blackbox.com

2 Click on 'Add Layout' tab, enter a name for the new Layout and click the 'Add' button.

3 The 'Layouts' tab will appear.

Scroll down to locate your new Layout, new Layouts appear as khaki rectangles.

4 Click 'Edit' button for your new Layout.

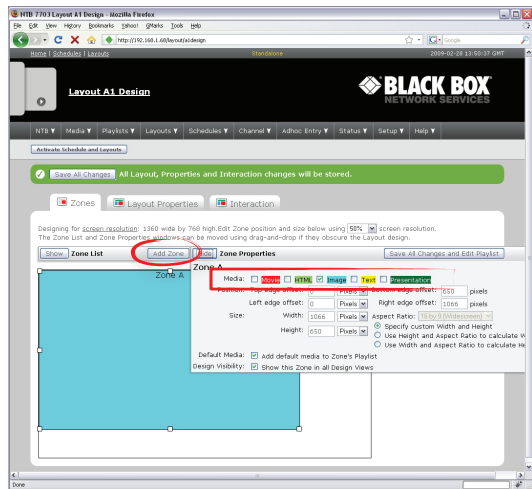
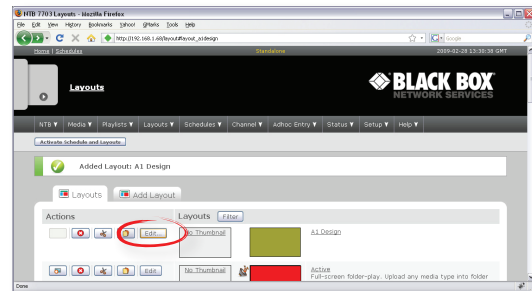
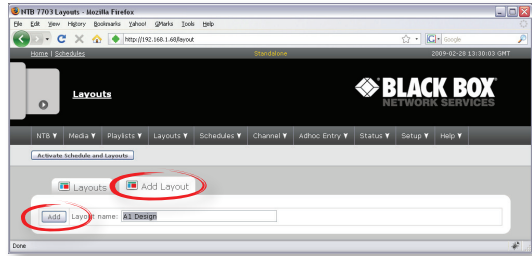
You will then be taken through to the Layout editor page.

5 Click 'Add Zone' and your first Zone will appear on the Layout editor. Use your mouse to drag or resize the Zone.

Then click 'Show' on the Zone Properties palette.

6 Tick the media types that you want to show in this Zone (only 1 'movie' Zone on Century & Decades Models).

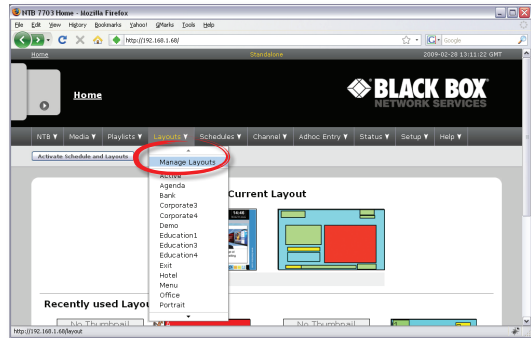
7 Repeat for each new Zone that you wish to add. Click 'Save All Changes and Edit Playlist' button to finish Zone Layout arranging.



2.3 How to Edit Layout and Zone Properties

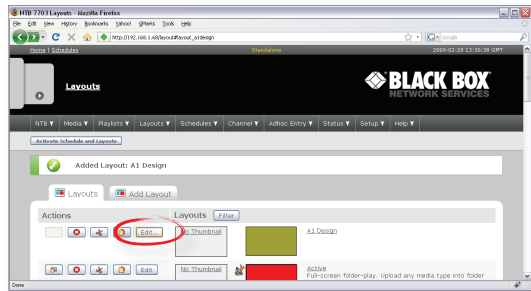
1 Log into the iCompel.

When the iCompel Home page appears select **'Manage Layouts'** under the **'Layouts'** drop-down menu.



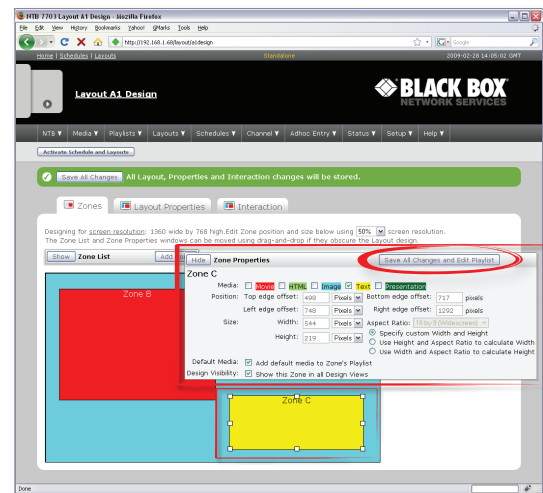
2 Locate the Layout that you wish to edit and click its 'Edit' button.

You will then be taken through to the Layout editor page for the chosen Layout.



Ensure the Zone properties window is expanded, if not click **'Show'** on the Zone Properties palette.

3 Click on the Zone itself in the diagram or double-click for the one beneath it. You can edit the size, position and properties of the Zone by dragging with a mouse or...



4 ...enter a new size and position details manually into the Zone properties palette.

5 Click 'Save All Changes and Edit Playlist' button to apply, which will take you through to edit the Playlist.

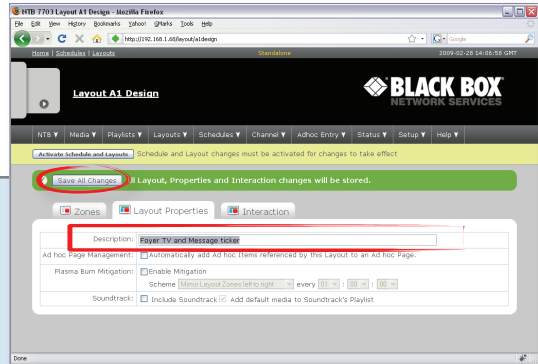
blackbox.com

6 OPTIONAL: Click the 'Layout Properties' tab.

Enter a description for the Layout.

! Video Zones should be 720 x 576 pixels or exactly 5 x 4 aspect ratio.

! Widescreen video Zones should be 1024 x 576 or exactly 16 x 9 aspect ratio.



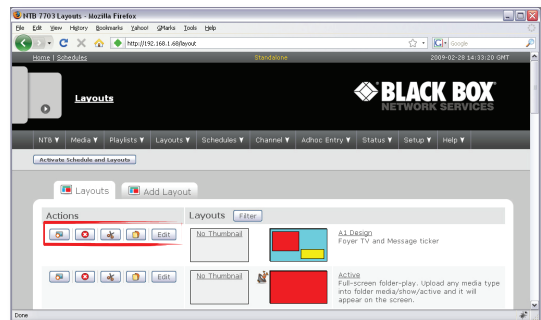
2.4 How to Copy, Rename or Delete a Layout

1 Log into the iCompel.

When the iCompel Home page appears **click on 'Manage Layouts'** from the 'Layouts' drop-down menu.

2 Locate the Layout that you wish to copy, rename or delete.

3 Click the delete (red cross) button to delete the Layout.



Or click the cut (scissors) or copy (two pages) button to rename or copy the Layout respectively. A new page will be drawn. Enter the name of the renamed/new Layout in the text box at the top of the page and click the 'Rename Layout' or 'Copy Layout' button respectively.

3.1 What is a Playlist?

A Playlist is an ordered list of media that will be shown in a particular Zone. iCompel Playlists are circular, meaning that they repeat after the last item is played. If a media file in the Playlist has been deleted then it is simply skipped with no break in play.

3.2 How to Add Folders or Files to a Playlist

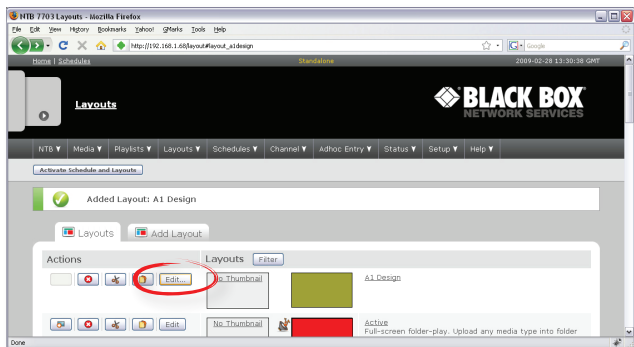
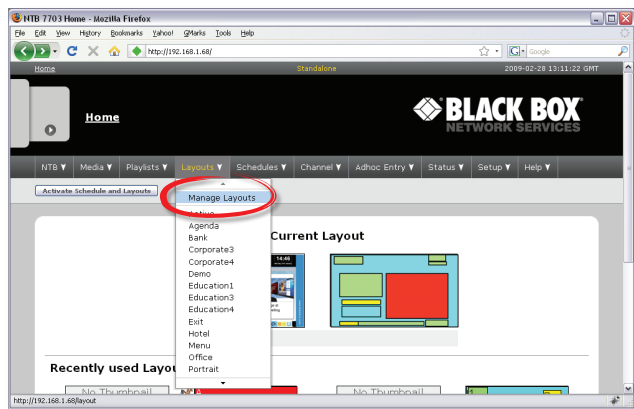
1 Upload the folders or files to the iCompel as described previously.

2 Log into the iCompel.

When the iCompel Home page appears **click on 'Manage Layouts'** from the **'Layouts'** drop-down menu.

3 Locate the Layout that has the Playlist that you wish to edit and click its **'Edit'** button.

A box will pop up, **click an 'Edit Playlist'** button.

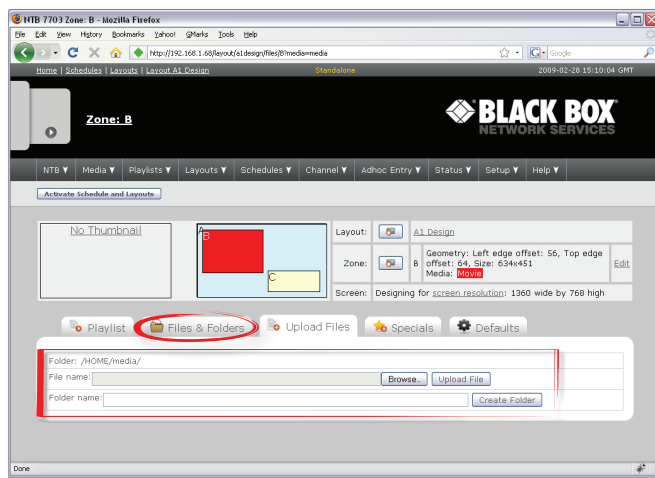


4 The Playlist page will appear.

Click the 'Files & Folders' tab and navigate through the folders on the iCompel until you find the one that has content that you wish to add to the Playlist.

In the 'Files' tab, click the 'Add Folder to Playlist' button to add the folder to the Playlist.

Alternatively: Click the 'Add' button alongside an individual file to add just that one file to the Playlist.



5 Repeat adding other folders or files to the Playlist.

6 Click the 'Playlist' tab to view the Playlist.

7 Click the 'Audition' button for the Layout, Zone or Playlist item to see what you have created.



If a file fails to appear in the list then the Zone is not enabled to show that media type. See Section 2.3 for instructions on how to enable media types for a Zone.

3.3 How to Add Special Items to a Playlist

Special items include text, newsfeeds, live video, web pages, clocks, tables and control elements.

Newsfeeds must be added to the iCompel and tables must be created on it before they can be added to a Playlist. Visit the relevant sections under 'Media' in the drop-down menu. Browse to any external web page that the iCompel must show and obtain the address, or URL, from the address bar in the browser.

1 Log onto the iCompel and edit the Playlist as described above.

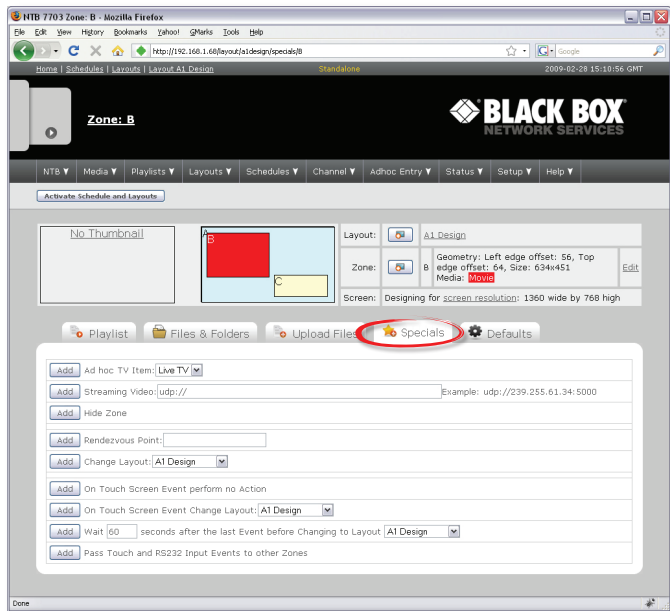
2 Click on the 'Specials' tab.

You will see a list of different item types that can be added to the Playlist, depending on the media types that you have allowed the Zone to play.

In each case you will need to either type text in or make a selection from a drop-down list.

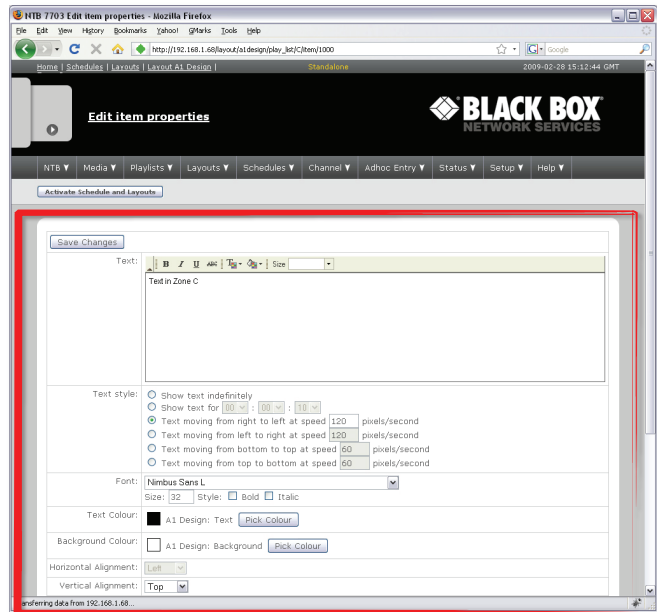
3 Enter text or make a selection and then click the 'Add' button to add the item to the Playlist.

4 Click an 'Audition' button to see what you have created.



3.4 How to Edit Playlist Item Properties

- 1 Log onto the iCompel and edit the Playlist as described above.
- 2 In the **'Playlist'** tab, click the **'Edit'** button to open the **'Edit Item Properties'** page.
- 3 Read the **Help pages** to find out what each control can do.
- 4 Click an **'Audition'** button to see what you have created.

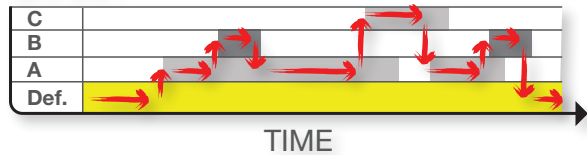


4.1 How the Schedule Works

The Schedule contains a default Layout and may contain other Layouts that will appear at certain times of day or days of week.

The default Layout will appear on the screen at all times when no other Layout is Scheduled.

LAYOUT



If a Layout is set to show when another non-default Layout is being shown then the Layout with the most recent start time will be shown.

4.2 How to Schedule Layouts

1 Log into the iCompel as an administrator.

Click on **'Manage Schedules'** from the **'Schedules'** drop-down menu.

Set the Default Layout:

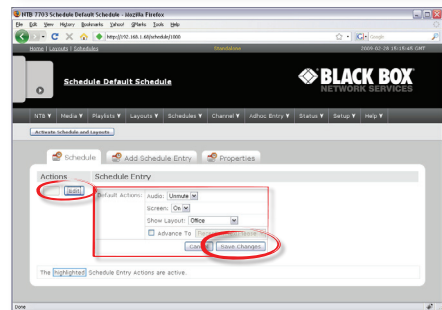
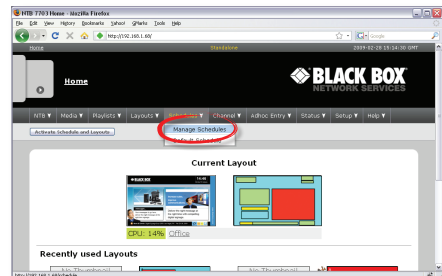
2 Click **'Edit'** for the Default Schedule.

3 Click **'Edit'** for the first (or default) Layout.

4 For **'Screen'** select **'Off'** if you want the screen to be shut down by default (recommended).

5 Select a Layout from the **'Show Layout'** drop-down list. This will be the default Layout.

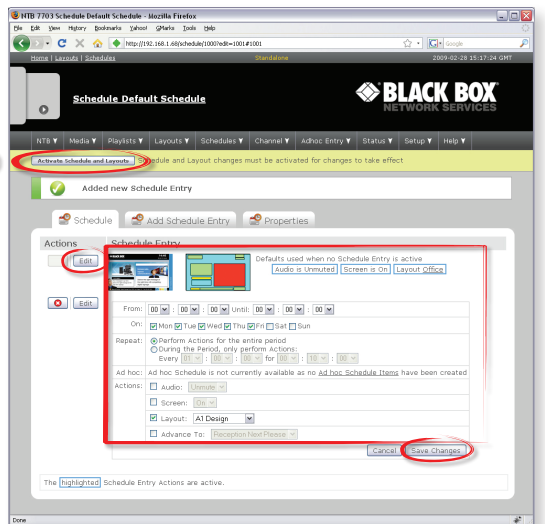
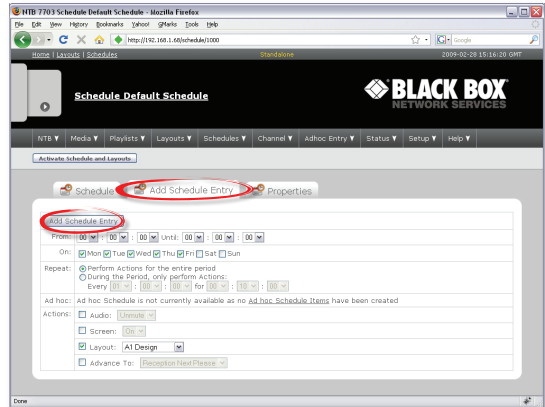
blackbox.com



6 Click **'Save'**.

Add a Scheduled Layout:

- 7 Click on the 'Add Schedule Entry' tab.
- 8 Edit the properties of the item (see 'Help').
Set a start time and an end time for the Layout.
Tick any days of week that this Layout should appear.
Tick 'Screen: On'.
Select a Layout from the 'Layout' drop-down list.
- 9 Click the 'Add Schedule Entry' button.
- 10 Repeat steps 6-8 for every Layout that must be Scheduled.
- 11 Click the 'Activate' button to make your new schedule go live.



5.1 What is Ad hoc?

Ad hoc Items are place-holders that can be put into a Playlist, just like other content, by an administrator but the contents of the Item can be updated by a lower-level (Ad hoc) user.

Ad hoc Users only have access to a few Ad hoc Items and have, therefore, very limited capacity to change the content on the display. A typical Ad hoc use is to give a receptionist the ability to change a daily welcome message or the TV station on the screen in the company foyer.

The administrator controls access to the Ad hoc items by creating one or more web pages, known as Ad hoc Pages, for the Ad hoc User and placing the Ad hoc Items on those pages.

Content types that can be made Ad hoc include:

- Text.
- TV station.
- Tables.



No user can make Ad hoc changes unless the Ad hoc Item has been placed on a Page and the user has permission to access that page.

The **5-step process** to enable and make Ad hoc changes (each step is covered in more detail later):

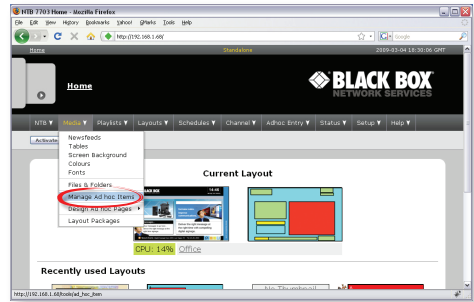
- 1 Create an Ad hoc Item.**
- 2 Add the Ad hoc Item to a Playlist.**
- 3 Create an Ad hoc user account on the iCompel.**
- 4 Create an Ad hoc Page for the new user and add the Ad hoc Item to the page.**
- 5 Make an ad-hoc change as an Ad hoc user.**

5.2 How to Create an Ad hoc Item

1 Click on the **'Manage Ad hoc Items'** from the **'Media'** drop-down menu.

2 Click **'Add item'** tab

3 Either select the media type (We will consider just text and TV media types at this stage) from the list, give the item a descriptive name and click the top **'Add'** button or select a table by name and click the bottom **'Add'** button to make it Ad hoc.



4 Enter the default words or TV station and click **'Save'**.

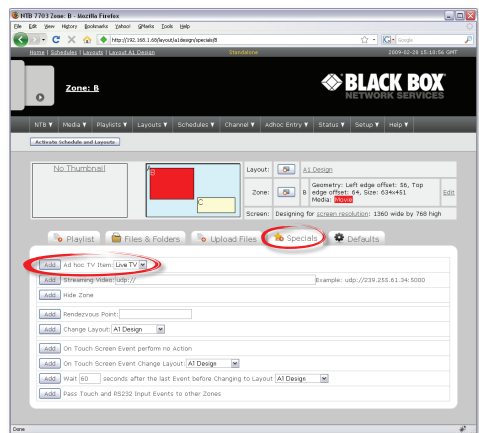
5.3 How to Playlist an Ad hoc Item

1 Browse to the iCompel, locate the **Layout** and click on the **Zone** that you wish to show the item in.

2 Go to the **'Specials'** tab.

3 Select the appropriate **'Ad hoc'** item from the a drop-down list.

4 Click **'Add'** to insert the item into the Playlist.



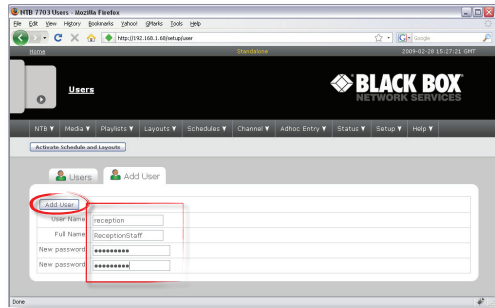
5.4 How to Create an Ad hoc User Account

1 Click on **'Setup'** from the iCompel drop-down menu and click on **'Users'** and then **'Add user'**.

2 Enter a user name, real name and password and click **'Add User'**.

3 Click **'Edit'** for the new account.

4 Ensure that only **'Ad hoc Access'** is ticked and click **'Update'**.



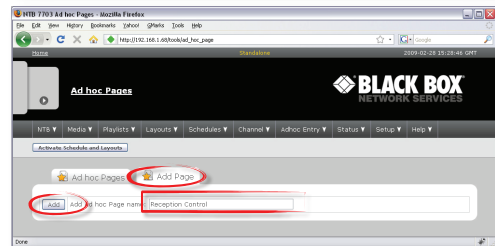
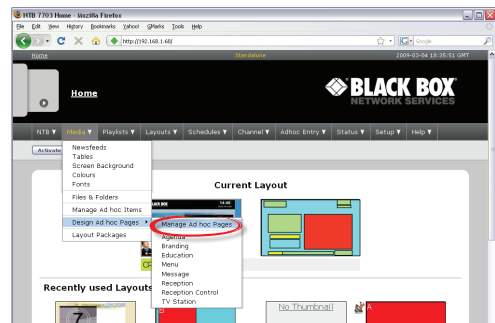
5.5 How to Create an Ad hoc Page and Add Items to it

1 Click on **'Manage Ad hoc pages'** from the **'Media | Design Ad hoc Pages'** drop-down menu and click on **'Add Page'**.

2 Enter a descriptive name for the page. The name will be very important and should make it clear what the purpose of the page is.

3 Click **'Add'**.

4 In the **'Ad hoc Pages'** tab, click **'Edit'** for the new page.



blackbox.com

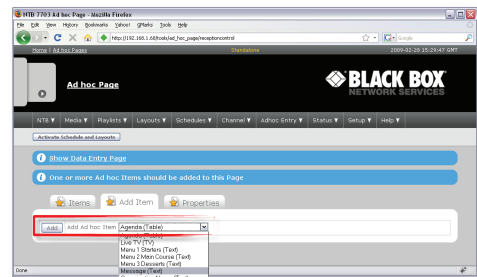
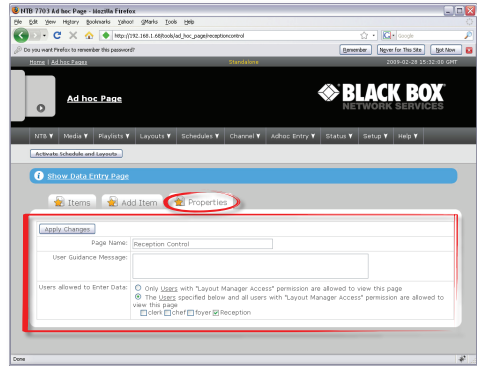
5 Click on the **'Properties'** tab.

6 Type instructions to the user in the **'User Guidance'** box. If it is unclear what should go in here, leave it blank and come back to it after trying out the page as an Ad hoc user.

7 **Tick or un-tick** user names to specify who should be allowed to access this page and edit the Ad hoc Items that will be placed on it and click **'Apply'**.

8 Click on the **'Add Item'** tab.

9 Use the drop-down list to select an Ad hoc Item and click the **'Add'** button to add it to the page.



10 Repeat until all items have been added.

5.6 How to Make Ad hoc Changes

- 1 **Log into the iCompel** as an Ad hoc user.
- 2 **Click the page describing the action that you wish to perform.** (This is where you will see how important page name choice is).
- 3 **Make / overwrite the necessary changes** to the item(s) shown on the page.

4 **Click the 'Save'** button.

5 If the Ad hoc item is currently showing on the screen then the change will be noticed immediately. If not then it will be noticed when the item does appear.

